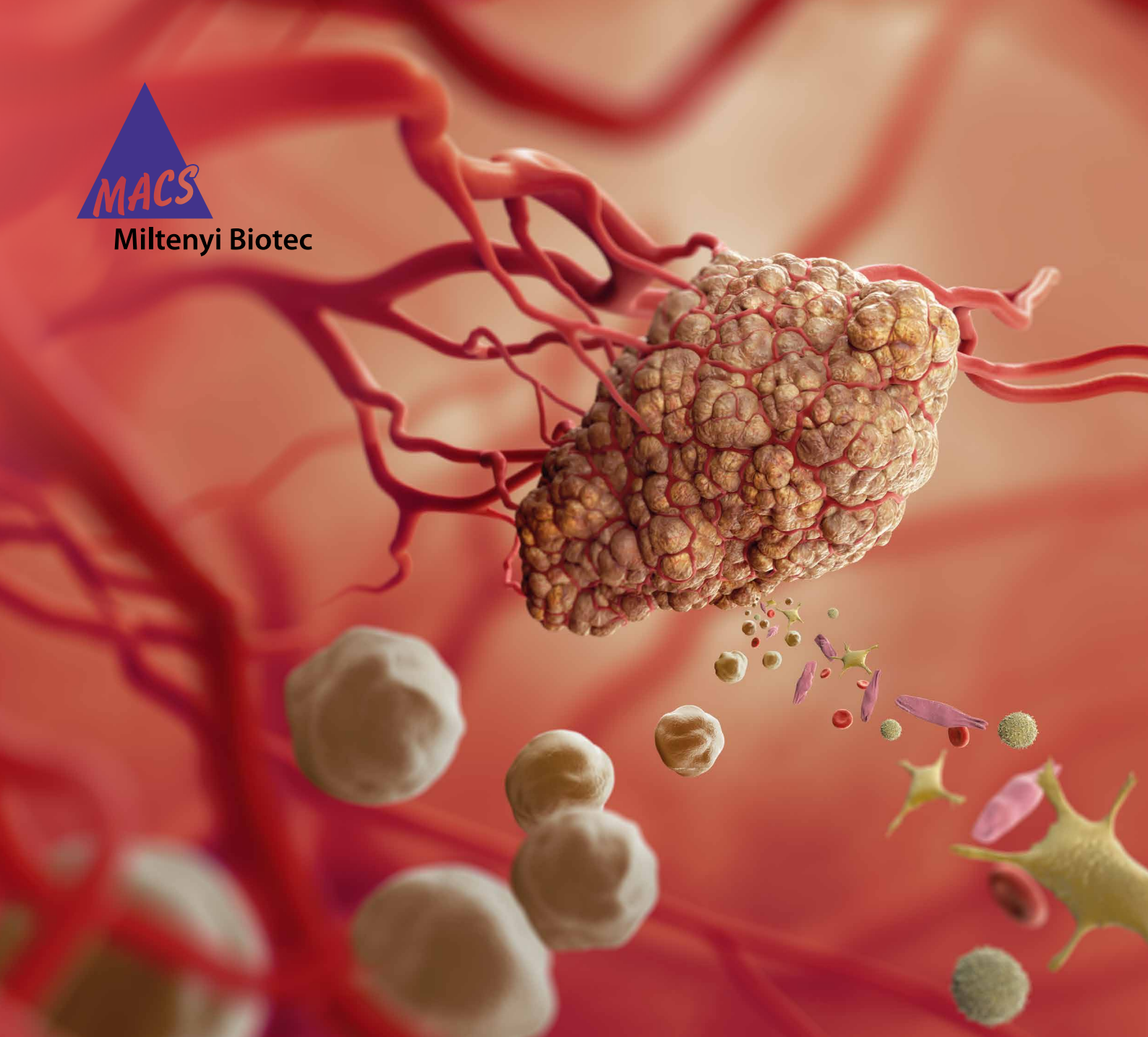




Miltenyi Biotec



# FFPE Tissue Dissociation Kit

Enhance the sensitivity of your molecular analysis

The FFPE Tissue Dissociation Kit in combination with the gentleMACS™ Octo Dissociator with Heaters allows for the efficient dissociation of formalin-fixed paraffin-embedded (FFPE) tissue to subsequently isolate tumor cells prior

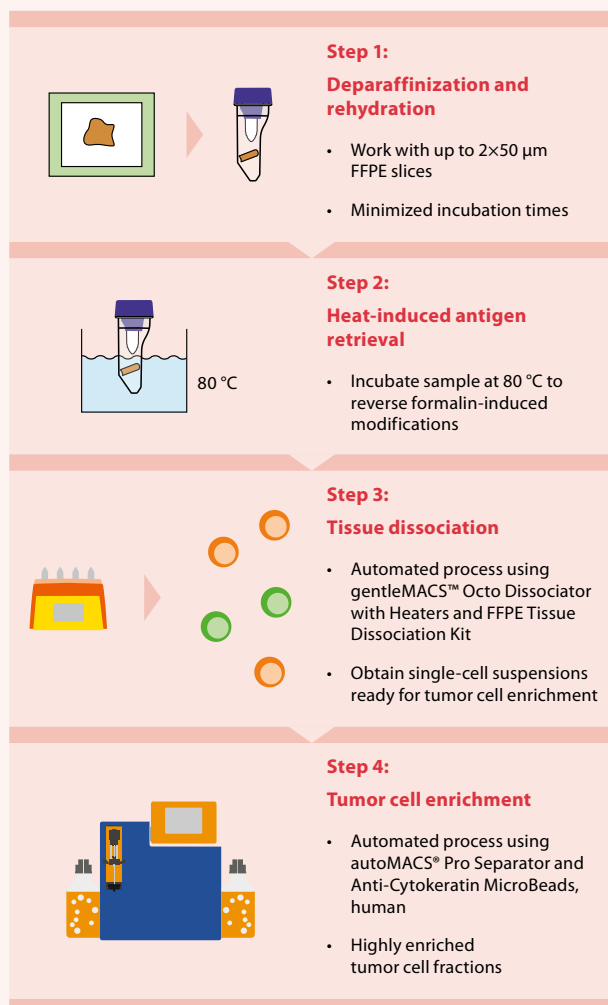
to molecular analysis. After dissociation, the preserved marker cytokeratin, specifically expressed in cells from epithelial origin, enables the analysis of human carcinoma tumor entities.

► [miltenyibiotec.com](http://miltenyibiotec.com)

## Benefits of the FFPE Tissue Dissociation Kit and subsequent tumor cell enrichment

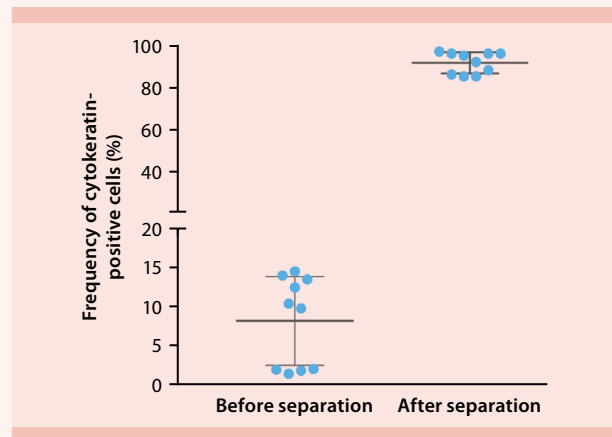
- Standardized workflow for reproducible results
- Efficient enrichment of tumor cells from carcinomas based on cytokeratin expression
- Enhanced sensitivity of DNA analysis from carcinomas with very low tumor cell content
- Clear discrimination between somatic and germline mutations
- Validated on multiple carcinoma tissues, for example: lung, colon, prostate, breast, pancreas, lymph nodes (metastasis)

## Standardized workflow



**Figure 1:** Step by step workflow to enrich carcinoma cells from FFPE tissues prior to molecular analysis.

## Optimal enrichment of carcinoma cells



**Figure 2:** Frequency of carcinoma cells (cytokeratin-positive) before and after enrichment from dissociated FFPE samples using Anti-Cytokeratin MicroBeads, human and autoMACS Pro Separator. Starting frequencies of carcinoma cells correspond to a mixture of dissociated FFPE breast carcinomas, containing significant amounts of cytokeratin-positive cells, and FFPE spleen tissue, containing almost exclusively cytokeratin-negative cells.

Product	Order no.
FFPE Tissue Dissociation Kit	130-118-052
gentleMACS Octo Dissociator with Heaters	130-096-427
gentleMACS C Tubes (25 tubes, sterile-packed)	130-093-237
Pre-Separation Filters (20 µm)	130-101-812
Pre-Separation Filters (70 µm)	130-095-823
autoMACS Pro Separator Starter Kit	130-092-545
Anti-Cytokeratin MicroBeads, human	130-123-094

For more information on molecular analysis download our scientific poster here:

► [miltenyibiotec.com/FFPE-poster](https://miltenyibiotec.com/FFPE-poster)

Watch our video tutorial on FFPE tissue dissociation here:

► [miltenyibiotec.com/FFPE-video](https://miltenyibiotec.com/FFPE-video)



Miltenyi Biotec B.V. & Co. KG | Friedrich-Ebert-Straße 68 | 51429 Bergisch Gladbach | Germany | Phone +49 2204 8306-0 | Fax +49 2204 85197  
 macs@miltenyibiotec.de | [www.miltenyibiotec.com](http://www.miltenyibiotec.com)

Miltenyi Biotec provides products and services worldwide. Visit [www.miltenyibiotec.com/local](http://www.miltenyibiotec.com/local) to find your nearest Miltenyi Biotec contact.

Unless otherwise specifically indicated, Miltenyi Biotec products and services are for research use only and not for therapeutic or diagnostic use. autoMACS, gentleMACS, MACS, and the MACS logo are registered trademarks or trademarks of Miltenyi Biotec B.V. & Co. KG and/or its affiliates in various countries worldwide. Copyright © 2019 Miltenyi Biotec B.V. & Co. KG and/or its affiliates. All rights reserved.