

Contents

1. Description

1.1 Background information

1.2 Applications

1.3 Reagent requirements

2. Protocol

2.1 Preparation of complete medium

2.2 Passaging of human ES or iPS cells

1. Description

This product is for research use only.

Components	500 mL StemMACS iPS-Brew Basal Medium XF, human 10 mL StemMACS iPS-Brew Supplement XF (50×), human
Specifications	Osmolality: 300–340 mOsmol/kg pH: 7.2–7.6
Quality control	Maintenance of human iPS cell morphology and surface phenotype (TRA-1-60 ⁺ , SSEA-4 ⁺) over five continuous passages. Low endotoxin level by Limulus Amoebocyte Lysate (LAL) assay. Tested negative for mycoplasma.
Storage	Store the StemMACS iPS-Brew Basal Medium XF, human protected from light at 2–8 °C. Do not freeze. The expiration date is indicated on the vial label. Upon arrival store StemMACS iPS-Brew Supplement XF (50×), human at –20 °C. Aliquots of the supplemented complete medium can be stored at –20 °C for up to 2 month. Avoid repeated freeze-thaw-cycles. Once thawed, aliquots should be kept at 2–8 °C and be used within 2 weeks. The expiration date is indicated on the vial label.

1.1 Background information

StemMACS iPS-Brew XF, human is a xeno-free medium formulation for the maintenance and expansion of human pluripotent stem cells under feeder-free conditions. StemMACS iPS-Brew XF supports rapid adaption of feeder-based cultures to a feeder-free environment. The formulation is compatible with standard cell attachment matrices, e.g. Matrigel® or vitronectin. It enables robust and efficient expansion of human embryonic stem cells (ES) or induced pluripotent stem cells (iPS) over multiple passages while maintaining a pluripotent phenotype as well as pluripotent differentiation potential. StemMACS iPS-Brew XF allows rapid culture re-initiation of pluripotent stem cell cultures after cryopreservation.

1.2 Applications

- Culture of human ES or iPS cells under xeno- and feeder-free conditions
- Rapid and easy adaption of feeder-based culture to a feeder-free environment
- Rapid culture initiation after cryopreservation

1.3 Reagent requirements

- Buffer: Dulbecco's phosphate-buffered saline (DPBS) without Ca²⁺ and Mg²⁺.
- A small molecule ROCK inhibitor, e.g., StemMACS Y27632 (# 130-103-922) or StemMACS Thiazovivin (# 130-104-461) to improve cell attachment and survival.
- StemMACS Passaging Solution XF, human (# 130-104-688) for passaging in cell clusters.
- 0.05% Trypsin/EDTA (alternatively, Accutase® or TrypLE™) and Soybean Trypsin Inhibitor (0.5 mg/mL) for single cell splitting.
- Cell attachment substrate. Validated substrates are, e.g., Matrigel®, Geltrex®, Laminin-511, Lamin-521, iMatrix-511, vitronectin, or CTS™ CELLstart™ substrate
- 15 mL conical tubes

2. Protocol

2.1 Preparation of complete medium

Before StemMACS iPS-Brew XF can be used in cell culture, the two kit components need to be mixed according to the following protocol to obtain the complete medium.

1. Thaw StemMACS iPS-Brew Supplement XF (50×) at 2–8 °C prior to use.
2. To obtain the complete medium add 10 mL StemMACS iPS-Brew Supplement XF (50×) to 500 mL StemMACS iPS-Brew Basal Medium XF. Mix well. The medium is ready-to-use now. Use the complete medium within 2 weeks when stored at 2–8 °C.
3. For longer storage, prepare 50 mL aliquots and store at –20 °C for up to 2 month. Thaw aliquots of complete medium overnight at 2–8 °C. Once thawed, keep aliquots at 2–8 °C and use within 2 weeks.

2.2 Passaging of human ES or iPS cells

▲ StemMACS iPS-Brew XF is compatible with standard passaging techniques such as traditional colony cutting, passaging in cell clusters or single cells. It is recommended to use the single-cell or cluster-splitting technique in the presence of a small molecule ROCK inhibitor.

Protocol for passing in cell clusters

1. Coat 6-well plates with an appropriate attachment substrate according to the manufacturer's instructions.
2. Aspirate the cell culture supernatant.
3. Wash the cell layer with 3 mL of buffer per well.
4. Add 1 mL of StemMACS Passaging Solution XF per well. Gently rock the plate to distribute the solution evenly.
5. Incubate at room temperature for 4 minutes. Monitor the detachment process under the microscope.

▲ **Note:** Colonies must not detach completely. Only wait until the colony edges lift off (figure 2).

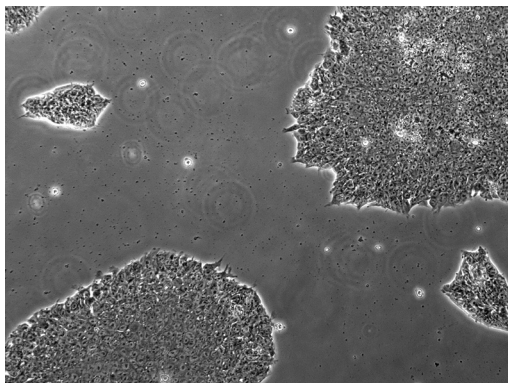


Figure 1: Colonies before addition of StemMACS Passaging Solution XF.

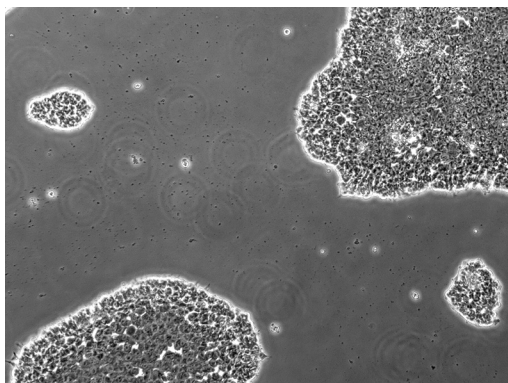


Figure 2: After 4 minutes incubation, colony edges start to lift off. At this point, the passaging solution should be removed.

6. Carefully remove the StemMACS Passaging Solution XF.
7. Per well, add 3 mL of StemMACS iPS-Brew XF supplemented with ROCK inhibitor (e.g., 2 μ M StemMACS Thiazovivin or 10 μ M StemMACS Y27632).
8. Gently detach the colonies by rinsing the well with a 5 mL serological pipette.
9. Transfer the cell suspension into a 15 mL conical tube.
10. Carefully pipette up and down 2–3 times to break up the colonies into smaller cell clusters.
11. Transfer the cell clusters into a fresh, appropriately coated 6-well cell culture plate. Use 2 mL StemMACS iPS-Brew XF supplemented with ROCK inhibitor per well and a splitting ratio between 1:6 and 1:20.

▲ **Note:** Take care to minimize break-up of colonies. Do not create single cells!

▲ **Note:** The optimal splitting ratio will depend on the cell line and must be determined empirically.

12. After 48 hours, replace medium with fresh StemMACS iPS-Brew XF without ROCK inhibitor and continue with daily medium changes.

▲ **Note:** Many ES and iPS cell lines will also tolerate every-other-day medium changes when using StemMACS iPS-Brew XF.

Protocol for single-cell splitting

1. Coat 6-well plates with an appropriate attachment substrate according to the manufacturer's instructions.
2. Aspirate cell medium, wash each well with 3 mL of buffer.
3. Add 0.7 mL of 0.05% Trypsin/EDTA per well (alternatively, use Accutase or TrypLE). Gently rock the plate to ensure even distribution of the enzyme solution.
4. Incubate for 5 minutes at 37 °C.
5. Stop enzymatic reaction by adding 2 mL of Soybean Trypsin Inhibitor (0.5 mg/mL) per well.
6. Using a 5 mL serological pipette, dissociate to a single-cell suspension by carefully pipetting up and down.
7. Determine cell number.
8. Depending on the cell line, seed 70,000–150,000 cells per well (7000–16,000 cells/cm²). Transfer the desired cell number into a 15 mL conical tube.
9. Centrifuge for 5 minutes at 200 \times g.
10. Aspirate supernatant.
11. Resuspend the cell pellet in StemMACS iPS-Brew XF supplemented with a small molecule ROCK inhibitor (10 μ M StemMACS Y27632 or 2 μ M StemMACS Thiazovivin). Use 2 mL medium per well.
12. After 48 hours, replace medium with fresh StemMACS iPS-Brew XF without ROCK inhibitor and continue with daily medium changes.

▲ **Note:** Many ES and iPS cell lines will also tolerate every-other-day medium changes when using StemMACS iPS-Brew XF.

Refer to www.miltenyibiotec.com for all data sheets and protocols. Miltenyi Biotec provides technical support worldwide. Visit www.miltenyibiotec.com for local Miltenyi Biotec Technical Support contact information.

Legal notices

Limited product warranty

Miltenyi Biotec B.V. & Co. KG and/or its affiliate(s) warrant this product to be free from material defects in workmanship and materials and to conform substantially with Miltenyi Biotec's published specifications for the product at the time of order, under normal use and conditions in accordance with its applicable documentation, for a period beginning on the date of delivery of the product by Miltenyi Biotec or its authorized distributor and ending on the expiration date of the product's applicable shelf life stated on the product label, packaging or documentation (as applicable) or, in the absence thereof, ONE (1) YEAR from date of delivery ("Product Warranty"). Miltenyi Biotec's Product Warranty is provided subject to the warranty terms as set forth in Miltenyi Biotec's General Terms and Conditions for the Sale of Products and Services available on Miltenyi Biotec's website at www.miltenyibiotec.com, as in effect at the time of order ("Product Warranty"). Additional terms may apply. BY USE OF THIS PRODUCT, THE CUSTOMER AGREES TO BE BOUND BY THESE TERMS.

THE CUSTOMER IS SOLELY RESPONSIBLE FOR DETERMINING IF A PRODUCT IS SUITABLE FOR CUSTOMER'S PARTICULAR PURPOSE AND APPLICATION METHODS.

Technical information

The technical information, data, protocols, and other statements provided by Miltenyi Biotec in this document are based on information, tests, or experience which Miltenyi Biotec believes to be reliable, but the accuracy or completeness of such information is not guaranteed. Such technical information and data are intended for persons with knowledge and technical skills sufficient to assess and apply their own informed judgment to the information. Miltenyi Biotec shall not be liable for any technical or editorial errors or omissions contained herein.

All information and specifications are subject to change without prior notice. Please contact Miltenyi Biotec Technical Support or visit www.miltenyibiotec.com for the most up-to-date information on Miltenyi Biotec products.

Licenses

This product and/or its use may be covered by one or more pending or issued patents and/or may have certain limitations. Certain uses may be excluded by separate terms and conditions. Please contact your local Miltenyi Biotec representative or visit Miltenyi Biotec's website at www.miltenyibiotec.com for more information.

The purchase of this product conveys to the customer the non-transferable right to use the purchased amount of the product in research conducted by the customer (whether the customer is an academic or for-profit entity). This product may not be further sold. Additional terms and conditions (including the terms of a Limited Use Label License) may apply.

CUSTOMER'S USE OF THIS PRODUCT MAY REQUIRE ADDITIONAL LICENSES DEPENDING ON THE SPECIFIC APPLICATION. THE CUSTOMER IS SOLELY RESPONSIBLE FOR DETERMINING FOR ITSELF WHETHER IT HAS ALL APPROPRIATE LICENSES IN PLACE. Miltenyi Biotec provides no warranty that customer's use of this product does not and will not infringe intellectual property rights owned by a third party. BY USE OF THIS PRODUCT, THE CUSTOMER AGREES TO BE BOUND BY THESE TERMS.

Trademarks

The Miltenyi Biotec logo and StemMACS are registered trademarks or trademarks of Miltenyi Biotec B.V. & Co. KG and/or its affiliates in various countries worldwide. All other trademarks mentioned in this publication are the property of their respective owners and are used for identification purposes only.

Copyright © 2023 Miltenyi Biotec and/or its affiliates. All rights reserved.