

# MACS® Cell Analysis

Products for flow cytometry

# 2011/1

## Product list

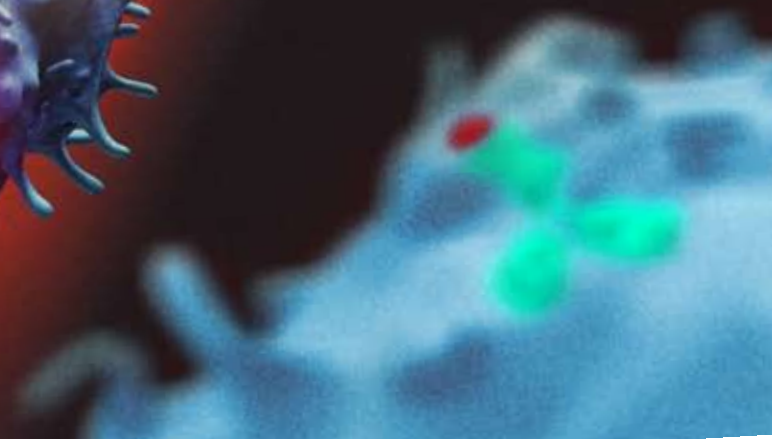
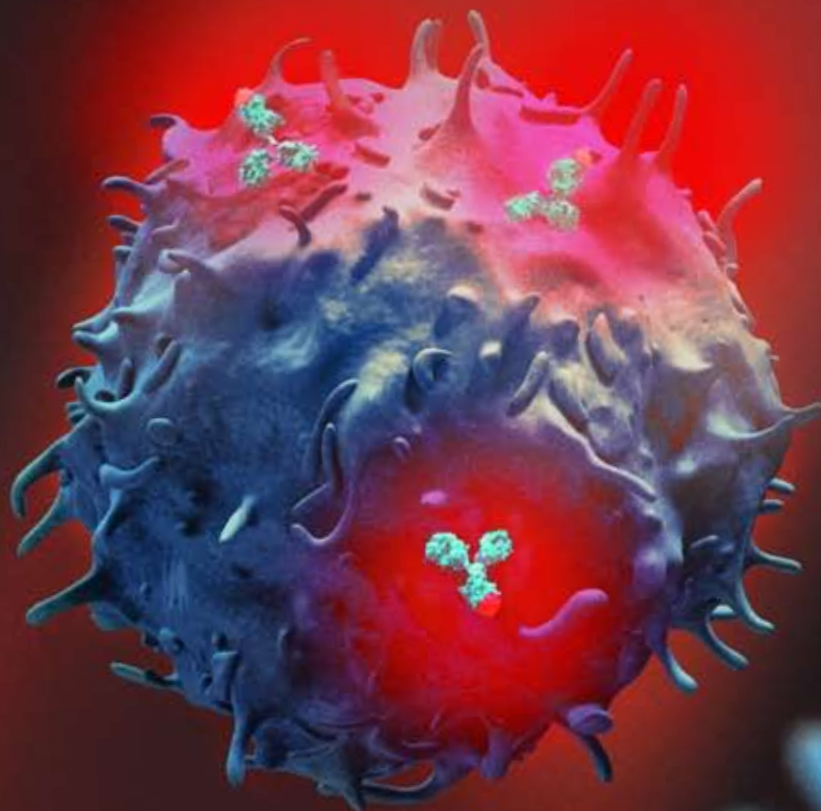
---

Antibodies

---

Complete kits for specific  
flow cytometric applications

---



## Important notices

**Unless otherwise specifically indicated, Miltenyi Biotec products and services are for research use only and not for therapeutic or diagnostic use.**

**All products and services are sold subject to the Terms and Conditions of Miltenyi Biotec in effect from time to time, unless otherwise expressly agreed in writing by an authorized representative of Miltenyi Biotec. A copy of these Terms and Conditions may be obtained electronically from Miltenyi Biotec's web site, [www.miltenyibiotec.com](http://www.miltenyibiotec.com), or by contacting us by telephone, fax, or postal mail at the addresses provided at the back.**

**This publication is provided for information purposes only, and the contents hereof are subject to change without notice. While great care has been taken to ensure accuracy of all prices and descriptions at the time of publication, Miltenyi Biotec can accept no responsibility for any errors or omissions. Our customers are advised to obtain the latest product and pricing information before relying on any published information and before placing orders for products or services.**

CliniMACS, MACS and MACS Logo, MACSQuant, MACSQuantify, Vio, and VioBlue are either registered trademarks or trademarks of Miltenyi Biotec GmbH or its affiliates in Germany, the United States and/or other countries. All other trademarks mentioned in this publication are the property of their respective owners and are used for identification purposes only.

## Table of contents

4	Antibodies · Human
15	Kits for cell detection and enumeration · Human
16	MACS Control Cocktails · Human
16	Products for cytokine detection · Human
18	Tumor cell detection kits · Human
18	Isotype control antibodies
19	Antibodies · Non-human primate
23	Products for cytokine detection · Non-human primate
23	Antibodies · Mouse
29	Kits for cell detection and enumeration · Mouse
29	MACS Control Cocktails · Mouse
30	Products for cytokine detection · Mouse
31	Antibodies · Rat
31	Indirect staining/other
33	Isolation and analysis of epitope-tagged proteins
33	Remarks

# MACS® Products for flow cytometry

Product	Clone Isotype	Brief description	Conjugate	Capacity <sup>1</sup> / content	Order no.
<b>Anti-A2B5</b>	105-HB29, mouse IgM	Detection of A2B5 <sup>+</sup> glial-restricted precursor cells in human, mouse, or rat	PE	100 tests <sup>4</sup>	<b>130-093-581</b>
			APC	100 tests <sup>4</sup>	<b>130-093-582</b>
			Biotin	100 tests <sup>4</sup>	<b>130-093-393</b>
			pure	100 µg in 1 mL	<b>130-093-394</b>
<b>Anti-CLA</b>	HECA-452, rat IgM	Detection of CLA <sup>+</sup> lymphocytes and monocytes	FITC	100 tests	<b>130-091-636</b>
			PE	100 tests	<b>130-091-635</b>
			Biotin	100 tests	<b>130-091-634</b>
			pure	100 µg in 1 mL	<b>130-092-629</b>
<b>Anti-Cytokeratin</b>	CK3-3E4, mouse IgG2a	Detection of normal and malignant human epithelial cells	pure <sup>7</sup>	100 µg in 1 mL	<b>130-090-865</b>
<b>Anti-Cytokeratin</b>	CK3-6H5, mouse IgG1	Detection of normal and malignant human epithelial cells	FITC <sup>7</sup> pure <sup>7</sup>	100 test 100 µg in 1 mL	<b>130-080-101</b> <b>130-090-866</b>
<b>Anti-Cytokeratin</b>	CK3-3E4, mouse IgG2a, CK3-11D5, mouse IgG1	Immunohistochemical detection of normal and malignant human epithelial cells	Alkaline Phosphatase <sup>7</sup>	up to 50 tests	<b>130-090-462</b>
<b>Anti-FoxP3</b>	3G3, mouse IgG1	Intracellular staining of FoxP3 <sup>+</sup> human, mouse, or non-human primate cells	PE	100 tests	<b>130-093-014</b>
			APC	100 tests	<b>130-093-013</b>
<b>Anti-FCεR1a</b>	CRA1, mouse IgG2b	Detection of FCεR1a expression on human cells	FITC	100 tests	<b>NEW</b> <b>130-095-978</b>
			PE	100 tests	<b>NEW</b> <b>130-095-979</b>
			APC	100 tests	<b>NEW</b> <b>130-095-980</b>
			VioBlue	100 tests	<b>NEW</b> <b>130-095-981</b>
			Biotin	100 tests	<b>NEW</b> <b>130-095-982</b>
<b>Anti-FCεR1a – functional grade</b>	CRA1, mouse IgG2b	Detection of FCεR1a expression on human cells	pure	100 µg in 1 mL	<b>NEW</b> <b>130-096-004</b>
<b>Anti-GITR</b>	DT5D3, mouse IgG1	Detection of GITR expression on human cells	PE	100 tests	<b>130-092-895</b>
			Biotin	100 tests	<b>130-092-886</b>
			pure	100 µg in 1 mL	<b>130-092-885</b>
<b>Anti-GITR – functional grade</b>	DT5D3, mouse IgG1	Unconjugated antibody for <i>in vitro</i> functional assays	pure	500 µg in 0.5 mL	<b>130-093-052</b>
<b>Anti-HLA-DR</b>	AC122, mouse IgG2a	Detection of antigen-presenting cells from PBMCs, cord blood, bone marrow, and tissues	FITC	100 tests	<b>130-095-295</b>
			PE	100 tests	<b>130-095-298</b>
			APC	100 tests	<b>130-095-297</b>
			VioBlue	100 tests	<b>130-095-293</b>
			PerCP	100 tests	<b>130-095-291</b>
<b>Anti-IgA</b>	IS11-8E10, mouse IgG1	Detection of human IgA	FITC	100 tests	<b>130-093-071</b>
			PE	100 tests	<b>130-093-128</b>
			APC	100 tests	<b>130-093-113</b>
			Biotin	100 tests	<b>130-093-114</b>
			pure	100 µg in 1 mL	<b>130-093-073</b>

# MACS® Products for flow cytometry

Product	Clone Isotype	Brief description	Conjugate	Capacity <sup>1</sup> / content	Order no.
<b>Antibodies - Human</b> (continued)					
<b>Anti-IgA2</b>	IS11-21E11, mouse IgG1	Detection of human IgA2	FITC	100 tests	<b>130-093-069</b>
			PE	100 tests	<b>130-093-070</b>
			APC	100 tests	<b>130-093-079</b>
			Biotin	100 tests	<b>130-093-080</b>
			pure	100 µg in 1 mL	<b>130-093-081</b>
<b>Anti-IgD</b>	IgD26, mouse IgG1	Detection of IgD+ human cells	FITC <sup>7</sup>	100 tests	<b>130-094-552</b>
			PE	100 tests	<b>130-094-539</b>
			APC	100 tests	<b>130-094-553</b>
			Biotin	100 tests	<b>130-094-554</b>
			pure	100 µg in 1 mL	<b>130-094-555</b>
<b>Anti-IgE</b>	MB10-5C4, mouse IgG1	Detection of human IgE	FITC	100 tests	<b>130-093-065</b>
			PE	100 tests	<b>130-093-066</b>
			APC	100 tests	<b>130-093-067</b>
			Biotin	100 tests	<b>130-093-068</b>
			pure	100 µg in 1 mL	<b>130-093-127</b>
<b>Anti-IgG</b>	IS11-3B2.2.3, mouse IgG1	Detection of human IgG	FITC	100 tests	<b>130-093-192</b>
			PE	100 tests	<b>130-093-193</b>
			APC	100 tests	<b>130-093-194</b>
			Biotin	100 tests	<b>130-093-195</b>
			pure	100 µg in 1 mL	<b>130-093-197</b>
<b>Anti-IgG1</b>	IS11-12 E4.23.20, mouse IgG1	Detection of human IgG1	PE	100 tests	<b>130-093-188</b>
			APC	100 tests	<b>130-093-189</b>
			Biotin	100 tests	<b>130-093-190</b>
<b>Anti-Igκ Light Chain</b>	IS11-24D5, mouse IgG1	Detection of human immunoglobulins with κ light chains	FITC	100 tests	<b>130-093-053</b>
			PE	100 tests	<b>130-093-054</b>
			APC	100 tests	<b>130-093-043</b>
			Biotin	100 tests	<b>130-093-042</b>
			pure	100 µg in 1 mL	<b>130-093-041</b>
<b>Anti-Igλ Light Chain</b>	IS7-24C7, mouse IgG1	Detection of human immunoglobulins with λ light chains	FITC	100 tests	<b>130-093-040</b>
			PE	100 tests	<b>130-093-039</b>
			APC	100 tests	<b>130-093-038</b>
			Biotin	100 tests	<b>130-093-025</b>
			pure	100 µg in 1 mL	<b>130-093-024</b>
<b>Anti-IgM</b>	PJ2-22H3, mouse IgG1	Detection of human IgM	PE	100 tests	<b>130-093-075</b>
			APC	100 tests	<b>130-093-076</b>
			Biotin	100 tests	<b>130-093-077</b>
			pure	100 µg in 1 mL	<b>130-093-078</b>
<b>Anti-iNKT</b>	6B11, mouse IgG1	Detection of human invariant NKT cells expressing the T cell receptor Va24-Ja18 combined with Vβ11	PE	100 tests	<b>130-094-838</b>
			APC	100 tests	<b>130-094-839</b>
			Biotin	100 tests	<b>130-094-841</b>
<b>Anti-iNKT – functional grade</b>	6B11, mouse IgG1	Specific activation and expansion of iNKT cells	pure	100 µg in 1 mL	<b>130-094-865</b>

# MACS® Products for flow cytometry

Product	Clone Isotype	Brief description	Conjugate	Capacity <sup>1/</sup> content	Order no.
<b>Antibodies - Human (continued)</b>					
<b>Anti-KIR2D</b>	NKVFS1, mouse IgG1	Detection of Killer immunoglobulin receptor (KIR) subtypes on human NK cells and subsets of T cells	PE	100 tests	<b>130-092-688</b>
			APC	100 tests	<b>130-092-687</b>
			Biotin	100 tests	<b>130-092-904</b>
			pure	100 µg in 1 mL	<b>130-092-689</b>
<b>Anti-Melanoma (MCSP)</b>	EP-1, mouse IgG1	Detection of human melanoma cells	PE	100 tests	<b>130-091-225</b>
			APC	100 tests	<b>130-091-252</b>
<b>Anti-MSCA-1 (W8B2)</b>	W8B2, mouse IgG1	Detection of MSCA-1 <sup>+</sup> marrow stromal cells	PE	100 tests	<b>130-093-587</b>
			APC	100 tests	<b>130-093-589</b>
			Biotin	100 tests	<b>130-093-593</b>
			pure	100 µg in 1 mL	<b>130-093-595</b>
<b>Anti-NKp80</b>	4A4.D10, mouse IgG1	Detection of NKp80 (KLRF1), expressed on all human NK cells and a small subset of T cells	FITC	100 tests	<b>130-094-843</b>
			PE	100 tests	<b>130-094-844</b>
			APC	100 tests	<b>130-094-845</b>
			Biotin	100 tests	<b>130-095-114</b>
<b>Anti-PSA-NCAM</b>	2-2B, mouse IgM	Detection of PSA-NCAM <sup>+</sup> neuronal-restricted precursor human, mouse, and rat cells	PE	100 tests <sup>4</sup>	<b>130-093-274</b>
			APC	100 tests <sup>4</sup>	<b>130-093-273</b>
<b>Anti-PTK7 (CCK-4)</b>	188B, mouse IgG2a	Detection of human plasmacytoid dendritic cells, type-2 myeloid dendritic cells, and hematopoietic progenitor cells in blood and bone marrow	PE	100 tests	<b>130-091-364</b>
			APC	100 tests	<b>130-091-366</b>
			Biotin	100 tests	<b>130-091-365</b>
			pure	100 µg in 1 mL	<b>130-091-578</b>
<b>Anti-Slan (M-DC8)</b>	DD1, mouse IgM	Detection of Slan (M-DC8) on human monocytic cells	FITC	100 tests	<b>130-093-027</b>
			PE	100 tests	<b>130-093-029</b>
			APC	100 tests	<b>130-093-031</b>
			Biotin	100 tests	<b>130-093-033</b>
<b>Anti-TCRα/β</b>	BW242/412, mouse IgG2b	Detection of human T cells	PE	100 tests	<b>130-091-236</b>
			APC	100 tests	<b>130-091-237</b>
<b>Anti-TCR Vd2</b>	123R3, mouse IgG1	Detection of human T cells	FITC	100 tests	<b>NEW</b> <b>130-095-798</b>
			PE	100 tests	<b>NEW</b> <b>130-095-796</b>
			APC	100 tests	<b>NEW</b> <b>130-095-803</b>
			Biotin	100 tests	<b>NEW</b> <b>130-095-795</b>
<b>CD1c (BDCA-1)</b>	AD5-8E7, mouse IgG2a	Detection of human CD1c (BDCA-1) <sup>+</sup> myeloid dendritic cells (MDC1s)	FITC <sup>7</sup>	100 tests	<b>130-090-507</b>
			PE	100 tests	<b>130-090-508</b>
			APC	100 tests	<b>130-090-903</b>
			Biotin <sup>7</sup>	100 tests	<b>130-090-692</b>
<b>CD2</b>	LT2, mouse IgG2b	Detection of human T and NK cells	pure <sup>7</sup>	100 µg in 1 mL	<b>130-090-695</b>
			PE	100 tests	<b>130-091-115</b>
<b>CD2 – functional grade</b>	LT2, mouse IgG2b	Functional grade antibody for T cell activation and expansion	Biotin	100 µg in 1 mL	<b>130-093-376</b>

# MACS® Products for flow cytometry

Product	Clone Isotype	Brief description	Conjugate	Capacity <sup>1</sup> / content	Order no.
<b>Antibodies - Human</b> (continued)					
<b>CD3</b>	BW264/56, mouse IgG2a	Detection of human T cells	FITC	100 tests	<b>130-080-401</b>
			PE	100 tests	<b>130-091-374</b>
			APC	100 tests	<b>130-091-373</b>
			VioBlue	100 tests	<b>130-094-363</b>
			PerCP	100 tests	<b>130-094-965</b>
<b>CD3 – functional grade</b>	OKT3, mouse IgG2a	Functional grade antibody for T cell activation and expansion	Biotin	100 µg in 1 mL	<b>130-093-377</b>
			pure	100 µg in 1 mL	<b>130-093-387</b>
<b>CD4 (VIT4)</b>	VIT4, mouse IgG2a	Detection of human T helper cells or identification of MACSelect 4-transfected cells	FITC	100 tests	<b>130-092-358</b>
			PE	100 tests	<b>130-092-373</b>
			APC	100 tests	<b>130-092-374</b>
			VioBlue	100 tests	<b>130-094-153</b>
			PerCP	100 tests	<b>130-094-963</b>
<b>CD4</b>	M-T466, mouse IgG1	Detection of human T helper cells or identification of MACSelect 4-transfected cells	FITC	100 tests	<b>130-080-501</b>
			PE	100 tests	<b>130-091-231</b>
			APC	100 tests	<b>130-091-232</b>
<b>CD6</b>	M-T411, mouse IgG1	Detection of human T and B cells	FITC <sup>7</sup>	100 tests	<b>130-091-482</b>
			PE	100 tests	<b>130-091-233</b>
			APC	100 tests	<b>130-091-234</b>
<b>CD8</b>	BW135/80, mouse IgG2a	Detection of human cytotoxic T cells	FITC	100 tests	<b>130-080-601</b>
			PE	100 tests	<b>130-091-084</b>
			APC	100 tests	<b>130-091-076</b>
			VioBlue	100 tests	<b>130-094-152</b>
			PerCP	100 tests	<b>130-094-972</b>
<b>CD10</b>	97C5, mouse IgG1	Detection of CD10 <sup>+</sup> B cells	FITC	100 tests	<b>130-093-448</b>
			PE	100 tests	<b>130-093-449</b>
			APC	100 tests	<b>130-093-450</b>
			Biotin	100 tests	<b>130-093-451</b>
<b>CD11b</b>	M1/70.15.11.5, rat IgG2b	Detection of human and mouse myeloid cells	FITC	100 tests	<b>130-081-201</b>
			PE	100 tests	<b>130-091-240</b>
			APC	100 tests	<b>130-091-241</b>
<b>CD11c</b>	MJ4-27G12.4.6, mouse IgG2b	Detection of CD11c <sup>+</sup> myeloid cells, especially type 1 myeloid dendritic cells (MDC1s)	FITC	100 tests	<b>130-092-410</b>
			PE	100 tests	<b>130-092-411</b>
			APC	100 tests	<b>130-092-412</b>
			Biotin	100 tests	<b>130-092-413</b>
			pure	100 µg in 1 mL	<b>130-092-414</b>
<b>CD14</b>	TÜK4, mouse IgG2a	Detection of human monocytes and macrophages	FITC	100 tests	<b>130-080-701</b>
			PE	100 tests	<b>130-091-242</b>
			APC	100 tests	<b>130-091-243</b>
			VioBlue	100 tests	<b>130-094-364</b>
			PerCP	100 tests	<b>130-094-969</b>

# MACS® Products for flow cytometry

Product	Clone Isotype	Brief description	Conjugate	Capacity <sup>1</sup> / content	Order no.
<b>Antibodies - Human</b> (continued)					
<b>CD15</b>	VIMC6, mouse IgM	Detection of human granulocytes	FITC	100 tests	<b>130-081-101</b>
			PE	100 tests	<b>130-091-375</b>
			APC	100 tests	<b>130-091-371</b>
<b>CD16</b>	VEP13, mouse IgM	Detection of human CD16 <sup>+</sup> cells	FITC	100 tests	<b>130-091-244</b>
			PE	100 tests	<b>130-091-245</b>
			APC	100 tests	<b>130-091-246</b>
<b>CD19</b>	LT19, mouse IgG1	Detection of human B cells and follicular dendritic cells	FITC <sup>7</sup>	100 tests	<b>130-091-328</b>
			PE	100 tests	<b>130-091-247</b>
			APC	100 tests	<b>130-091-248</b>
<b>CD20</b>	LT20, mouse IgG1	Detection of human B cells	FITC	100 tests	<b>130-091-108</b>
			PE	100 tests	<b>130-091-109</b>
			VioBlue	100 tests	<b>130-094-167</b>
			PerCP	100 tests	<b>130-094-976</b>
<b>CD23</b>	M-L234, mouse IgG1	Identification and enumeration of CD23 (FcεRII, IgE Fc receptor, or low affinity IgE receptor) on human cells	PE	100 tests	<b>130-094-505</b>
			APC	100 tests	<b>130-094-508</b>
			Biotin	100 tests	<b>130-094-510</b>
<b>CD24</b>	32D12, mouse IgG1	Detection of CD24-expressing cells, e.g., cancer stem cells	FITC	100 tests	<b>NEW</b> <b>130-095-952</b>
			PE	100 tests	<b>NEW</b> <b>130-095-953</b>
			APC	100 tests	<b>NEW</b> <b>130-095-954</b>
<b>CD25</b>	4E3, mouse IgG2b	Detection of activated human T and B cells and regulatory T cells	PE	100 tests	<b>130-091-024</b>
			APC	100 tests	<b>130-092-858</b>
			Biotin	100 tests	<b>130-091-235</b>
<b>CD26</b>	FR10-11G9, mouse IgG2a	Detection of human CD26 <sup>+</sup> cells	PE	100 tests	<b>130-093-440</b>
			APC	100 tests	<b>130-093-441</b>
			Biotin	100 tests	<b>130-093-442</b>
<b>CD27</b>	M-T271, mouse IgG1	Detection of CD27 on human T, B, and NK cells	FITC	100 tests	<b>130-093-184</b>
			PE	100 tests	<b>130-093-185</b>
			APC	100 tests	<b>130-093-186</b>
			Biotin	100 tests	<b>130-093-196</b>
<b>CD28</b>	15E8, mouse IgG1	Detection of CD28 on human leukocytes	PE	100 tests	<b>130-092-921</b>
			APC	100 tests	<b>130-092-923</b>
			Biotin	100 tests	<b>130-092-955</b>
<b>CD28 – functional grade</b>	15E8, mouse IgG1	Functional grade antibody for T cell activation and expansion	Biotin	100 µg in 1 mL	<b>130-093-386</b>
			pure	100 µg in 1 mL	<b>130-093-375</b>
<b>CD30</b>	Ki-2, mouse IgG1	Detection of human Hodgkin/Reed- Sternberg cells or activated T and B cells	PE	100 tests	<b>130-081-401</b>
<b>CD31</b>	AC128, mouse IgG1	Detection of human CD31 <sup>+</sup> cells	FITC	100 tests	<b>130-092-654</b>
			PE	100 tests	<b>130-092-653</b>
			APC	100 tests	<b>130-092-652</b>

# MACS® Products for flow cytometry

Product	Clone Isotype	Brief description	Conjugate	Capacity <sup>1</sup> / content	Order no.
<b>Antibodies - Human</b> (continued)					
<b>CD33</b>	AC104.3E3, mouse IgG1	Detection of human myeloid cells	PE	100 tests	<b>130-091-732</b>
			APC <sup>z</sup>	100 tests	<b>130-091-731</b>
<b>CD34</b>	AC136, mouse IgG2a	Detection of human hematopoietic stem and progenitor cells	FITC	100 tests	<b>130-081-001</b>
			PE	100 tests	<b>130-081-002</b>
			APC	100 tests	<b>130-090-954</b>
			VioBlue	100 tests	<b>130-095-393</b>
<b>CD36</b>	AC106, mouse IgG2a	Detection of CD36 on platelets, monocytes/macrophages and endothelium and erythroid precursors	FITC	100 tests	<b>130-095-470</b>
			PE	100 tests	<b>130-095-472</b>
			APC	100 tests	<b>130-095-475</b>
			Biotin	100 tests	<b>130-095-478</b>
			VioBlue	100 tests	<b>130-095-482</b>
			PerCP	100 tests	<b>130-095-480</b>
<b>CD38</b>	IB6, mouse IgG2b	Detection of human immature and activated T and B cells, and plasma cells	FITC	100 tests	<b>130-092-259</b>
			PE	100 tests	<b>130-092-260</b>
			APC	100 tests	<b>130-092-261</b>
			Biotin	100 tests	<b>130-092-288</b>
<b>CD39</b>	MZ18-23C8, mouse IgG1	Detection of human CD39 <sup>+</sup> regulatory T cells and other CD39-expressing cells	FITC	100 tests	<b>130-093-502</b>
			PE	100 tests	<b>130-093-503</b>
			APC	100 tests	<b>130-093-504</b>
			Biotin	100 tests	<b>130-093-505</b>
			pure	100 µg in 1 mL	<b>130-093-506</b>
<b>CD40</b>	HB14, mouse IgG1	Detection of CD40 on B cells, macrophages, follicular dendritic cells, and a subset of peripheral T cells	PE	100 tests	<b>130-094-135</b>
			APC	100 tests	<b>130-094-137</b>
			Biotin	100 tests	<b>130-094-142</b>
<b>CD40 – functional grade</b>	HB14, mouse IgG1	Unconjugated antibody for blocking of CD40-CD154 interaction	pure	100 µg in 1 mL	<b>130-094-133</b>
<b>CD44</b>	DB105, mouse IgG1	Detection of CD44 on human cells	FITC	100 tests	<b>130-095-195</b>
			PE	100 tests	<b>130-095-180</b>
			APC	100 tests	<b>130-095-177</b>
<b>CD45</b>	5B1, mouse IgG2a	Detection of human leukocytes	FITC	100 tests	<b>130-080-202</b>
			PE	100 tests	<b>130-080-201</b>
			APC	100 tests	<b>130-091-230</b>
			VioBlue	100 tests	<b>130-092-880</b>
			PerCP	100 tests	<b>130-094-975</b>
<b>CD45RA</b>	T6D11, mouse IgG2b	Detection of subsets of human T cells and B cells	FITC	100 tests	<b>130-092-247</b>
			PE	100 tests	<b>130-092-248</b>
			APC	100 tests	<b>130-092-249</b>
			VioBlue	100 tests	<b>130-095-464</b>
			PerCP	100 tests	<b>130-095-466</b>
			Biotin	100 tests	<b>130-096-259</b>

**NEW**

# MACS® Products for flow cytometry

Product	Clone Isotype	Brief description	Conjugate	Capacity <sup>1</sup> / content	Order no.
<b>Antibodies - Human</b> (continued)					
<b>CD45RO</b>	UCHL1, mouse IgG2a	Detection of CD45 <sup>+</sup> human cells – identification of human T cell subsets.	FITC	100 tests	<b>130-095-462</b>
			PE	100 tests	<b>130-095-457</b>
			APC	100 tests	<b>130-095-460</b>
			PerCP	100 tests	<b>130-095-451</b>
			Biotin	100 tests	<b>130-096-263</b>
<b>CD49d</b>	MZ18-24A9, mouse IgG2b	Detection of CD49d on human cells	FITC	100 tests	<b>130-093-283</b>
			PE	100 tests	<b>130-093-282</b>
			APC	100 tests	<b>130-093-281</b>
			Biotin	100 tests	<b>130-093-280</b>
			pure	100 µg in 1 mL	<b>130-093-279</b>
<b>CD56</b>	AF12-7H3, mouse IgG1	Detection of human NK cells	PE <sup>7</sup>	100 tests	<b>130-090-755</b>
			APC <sup>7</sup>	100 tests	<b>130-090-843</b>
			pure <sup>7</sup>	50 µg in 1 mL	<b>130-090-955</b>
<b>CD57</b>	TB03, mouse IgM	Detection of CD57 expression on human T cell and NK cell subsets	FITC	100 tests	<b>130-092-174</b>
			PE	100 tests	<b>130-092-139</b>
			APC	100 tests	<b>130-092-141</b>
			Biotin	100 tests	<b>130-092-620</b>
<b>CD61</b>	Y2/51, mouse IgG1	Detection of human megakaryocytes and platelets	PE	100 tests	<b>130-081-501</b>
<b>CD62L</b>	145/15, mouse IgG1	Detection of human L-selectin– expressing cells	FITC	100 tests	<b>130-091-757</b>
			PE	100 tests	<b>130-091-756</b>
			APC	100 tests	<b>130-091-755</b>
<b>CD66abce</b>	TET2, mouse IgG2b	Detection of CD66abce expression on granulocytes, neutrophils, and some epithelial cells	FITC	100 tests	<b>130-093-132</b>
			PE	100 tests	<b>130-093-133</b>
			APC	100 tests	<b>130-093-155</b>
			Biotin	100 tests	<b>130-093-156</b>
<b>CD69</b>	FN50, mouse IgG1	Detection of activated human T, B, and NK cells	FITC	100 tests	<b>130-092-166</b>
			PE	100 tests	<b>130-092-160</b>
			APC	100 tests	<b>130-092-159</b>
			Biotin	100 tests	<b>130-092-161</b>
<b>CD71</b>	AC102, mouse IgG2a	Detection of human proliferating cells	PE	100 tests	<b>130-091-728</b>
			APC	100 tests	<b>130-091-727</b>
<b>CD73</b>	AD2, mouse IgG1	Detection of CD73 <sup>+</sup> lymphocytes, follicular dendritic cells, endothelial cells and marrow stromal cells (MSCs)	PE	100 tests	<b>130-095-182</b>
			APC	100 tests	<b>130-095-183</b>
			Biotin	100 tests	<b>130-095-184</b>
			pure	100 µg in 1 mL	<b>130-095-185</b>
<b>CD83</b>	HB15, mouse IgG1	Detection of CD83-expressing human cells, e.g., mature DCs	PE	100 tests	<b>130-094-181</b>
			APC	100 tests	<b>130-094-186</b>
			Biotin	100 tests	<b>130-094-177</b>

# MACS® Products for flow cytometry

Product	Clone Isotype	Brief description	Conjugate	Capacity <sup>1/</sup> content	Order no.
<b>Antibodies - Human</b> (continued)					
<b>CD84</b>	MZ18-21F6, mouse IgG1	Detection of CD84 expression on human cells	FITC	100 tests	<b>130-093-278</b>
			PE	100 tests	<b>130-093-277</b>
			APC	100 tests	<b>130-093-276</b>
			Biotin	100 tests	<b>130-093-275</b>
<b>CD86</b>	FM95, mouse IgG1	Detection of CD86 <sup>+</sup> monocytes, monitoring of DC maturation	FITC	100 tests	<b>130-094-878</b>
			PE	100 tests	<b>130-094-877</b>
			APC	100 tests	<b>130-094-876</b>
<b>CD90</b>	DG3, mouse IgG1	Detection of CD90 <sup>+</sup> thymocyte, neurons, cord blood and bone marrow cells and mesenchymal stromal cells (MSCs)	FITC	100 tests	<b>130-095-403</b>
			PE	100 tests	<b>130-095-400</b>
			APC	100 tests	<b>130-095-402</b>
<b>CD95</b>	DX2, mouse IgG1	Detection of CD95 on human cells	FITC	100 tests	<b>130-092-415</b>
			PE	100 tests	<b>130-092-416</b>
			APC	100 tests	<b>130-092-417</b>
			Biotin	100 tests	<b>130-092-418</b>
<b>CD105</b>	43A4E1, mouse IgG1	Detection of CD105 <sup>+</sup> cells, e.g., endothelial cells or MSCs	PE	100 tests	<b>130-094-941</b>
			APC	100 tests	<b>130-094-926</b>
			Biotin	100 tests	<b>130-094-916</b>
<b>CD101</b>	BB27, mouse IgG1	Identification of CD101 <sup>+</sup> monocytes, granulocytes, subsets of dendritic cells (DCs) and some subpopulations of FoxP3 <sup>+</sup> Tregs	PE	100 tests	<b>130-095-225</b>
			Biotin	100 tests	<b>130-095-221</b>
			APC	100 tests	<b>130-095-132</b>
<b>CD107a</b>	H4A3, mouse IgG1	Detection of CD107a <sup>+</sup> T cells by flow cytometry	FITC	100 tests	<b>130-095-518</b>
			PE	100 tests	<b>130-095-515</b>
			APC	100 tests	<b>130-095-510</b>
			VioBlue	100 tests	<b>130-095-520</b>
<b>CD117 (A3C6E2)</b>	A3C6E2, mouse IgG1	Detection of hematopoietic and nonhematopoietic stem and progenitor cells	PE	100 tests	<b>130-091-734</b>
			APC	100 tests	<b>130-091-733</b>
<b>CD117 (AC126)</b>	AC126, mouse IgG1	Detection of hematopoietic and nonhematopoietic stem and progenitor cells	PE	100 tests	<b>130-091-735</b>
<b>CD123</b>	AC145, mouse IgG2a	Detection of human basophilic granulocytes	FITC	100 tests	<b>130-090-897</b>
			PE	100 tests	<b>130-090-899</b>
			APC	100 tests	<b>130-090-901</b>
			pure	50 µg in 1 mL	<b>130-090-940</b>
<b>CD127</b>	MB15-18C9, mouse IgG2a	Detection of human CD127 T cells, e.g., memory CD8 T cell precursors or CD127 <sup>-</sup> regulatory T cells	FITC	100 tests	<b>130-094-888</b>
			PE	100 tests	<b>130-094-889</b>
			APC	100 tests	<b>130-094-890</b>
			Biotin	100 tests	<b>130-094-891</b>
			pure	100 µg in 1 mL	<b>130-094-942</b>
<b>CD133/1</b>	W6B3C1, mouse IgG1	Evaluation of CD133 expression in human tissue by Western blot	pure	100 µg in 1 mL	<b>130-092-395</b>

**Coming  
soon**

# MACS® Products for flow cytometry

Product	Clone Isotype	Brief description	Conjugate	Capacity <sup>1/</sup> content	Order no.
<b>Antibodies - Human</b> (continued)					
<b>CD133/1</b>	AC133, mouse IgG1	Detection of human stem and progenitor cells	PE <sup>7</sup>	100 tests	<b>130-080-801</b>
			APC <sup>7</sup>	100 tests	<b>130-090-826</b>
			Biotin <sup>7</sup>	100 tests	<b>130-090-664</b>
			pure <sup>7</sup>	50 µg in 1 mL	<b>130-090-422</b>
<b>CD133/2</b>	293C3, mouse IgG2b	Detection of human stem and progenitor cells	PE	100 tests	<b>130-090-853</b>
			APC	100 tests	<b>130-090-854</b>
			Biotin	100 tests	<b>130-090-852</b>
			pure	50 µg in 1 mL	<b>130-090-851</b>
<b>CD133/2 CE</b>	293C3, mouse IgG2b	Intended for the <i>in vitro</i> diagnostic identification of CD133 <sup>+</sup> cells by flow cytometry. The cell source can be whole blood, mobilized whole blood, leukapheresis harvest, mobilized leukapheresis harvest, bone marrow, or the target fraction of a CD133 <sup>+</sup> cell enrichment with the CliniMACS CD133 System. CE-marked in compliance with the European Union Directive 98/79/EC for <i>in vitro</i> diagnostic medical devices.  <i>This product is not available in the USA.</i>	PE	100 tests (up to 10 <sup>8</sup> cells)	<b>170-070-702</b>
<b>CD133/2</b>	AC141, mouse IgG1	Detection of human stem and progenitor cells	PE	100 tests	<b>130-080-901</b>
			pure	50 µg in 1 mL	<b>130-090-423</b>
<b>CD134 (OX40)</b>	ACT35, mouse IgG1	Detection of activated T lymphocytes	PE	100 tests	<b>130-095-270</b>
			APC	100 tests	<b>130-095-272</b>
			Biotin	100 tests	<b>130-095-274</b>
<b>CD137</b>	4B4-1, mouse IgG1	Detection of activated antigen-specific CD137 <sup>+</sup> T cells	PE	100 tests	<b>130-093-475</b>
			APC	100 tests	<b>130-094-821</b>
			Biotin	100 tests	<b>130-094-824</b>
<b>CD138</b>	B-B4, mouse IgG1	Detection of normal and malignant human plasma cells	PE	100 tests	<b>130-081-301</b>
			APC	100 tests	<b>130-091-250</b>
<b>CD141 (BDCA-3)</b>	AD5-14H12, mouse IgG1	Detection of human CD141 (BDCA-3) <sup>+</sup> type-2 myeloid dendritic cells (MDC2s)	FITC	100 tests	<b>130-090-513</b>
			PE	100 tests	<b>130-090-514</b>
			APC	100 tests	<b>130-090-907</b>
			Biotin	100 tests	<b>130-090-749</b>
			pure	100 µg in 1 mL	<b>130-090-694</b>
<b>CD146</b>	541-10B2, mouse IgG1	Detection of endothelial cells, smooth muscle cells, follicular dendritic cells, melanoma cells, and a sub-population of activated T lymphocytes	FITC	100 tests	<b>130-092-851</b>
			PE	100 tests	<b>130-092-853</b>
			APC	100 tests	<b>130-092-849</b>
			Biotin	100 tests	<b>130-092-852</b>
			pure	100 µg in 1 mL	<b>130-092-850</b>
<b>CD154</b>	5C8, mouse IgG2a	Detection of activated human CD4 <sup>+</sup> T cells	FITC	100 tests	<b>NEW</b> <b>130-096-233</b>
			PE	100 tests	<b>130-092-289</b>
			APC	100 tests	<b>130-092-290</b>
			Biotin	100 tests	<b>130-092-690</b>
			VioBlue	100 tests	<b>NEW</b> <b>130-096-217</b>

# MACS® Products for flow cytometry

Product	Clone Isotype	Brief description	Conjugate	Capacity <sup>1</sup> / content	Order no.
<b>Antibodies - Human (continued)</b>					
<b>CD158a/h (KIR2DL1/DS1)</b>	11PB6, mouse IgG1	Detection of Killer-Immunoglobulin-like receptor (KIR) 2DL1 and (KIR) 2DS1 on human NK cells and subsets of T cells	FITC	100 tests	<b>130-092-811</b>
			PE	100 tests	<b>130-092-684</b>
			APC	100 tests	<b>130-092-685</b>
			VioBlue	100 tests	<b>NEW</b> <b>130-095-233</b>
			Biotin	100 tests	<b>130-092-683</b>
			pure	100 µg in 1 mL	<b>130-092-682</b>
<b>CD158b (KIR2DL2/DL3)</b>	DX27, mouse IgG2a	Detection of KIR2DL2 and KIR2DL3 expressing NK and T cells	PE	100 tests	<b>130-092-618</b>
			APC	100 tests	<b>130-092-617</b>
			PerCP	100 tests	<b>130-095-285</b>
			pure	100 µg in 1 mL	<b>130-092-615</b>
<b>CD158e (KIR3DL1)</b>	DX9, mouse IgG1	Detection of KIR3DL1-expressing NK and T cells	FITC	100 tests	<b>130-092-568</b>
			PE	100 tests	<b>130-092-473</b>
			APC	100 tests	<b>130-092-474</b>
			PerCP	100 tests	<b>NEW</b> <b>130-095-287</b>
			Biotin	100 tests	<b>130-092-475</b>
			VioBlue	100 tests	<b>130-095-234</b>
pure	100 µg in 1 mL	<b>130-092-555</b>			
<b>CD158e/k (KIR3DL1/DL2)</b>	5.331, mouse IgG1	Detection of Killer-Immunoglobulin-like receptor (KIR) 3DL1 and (KIR) 3DL2 on human NK cells and subsets of T cells	PE	100 tests	<b>130-095-205</b>
			Biotin	100 tests	<b>130-095-201</b>
			pure	100 µg in 1 mL	<b>130-095-199</b>
<b>CD158i (KIR2DS4)</b>	JJC11.6, mouse IgG1	Detection of KIR2DS4-expressing NK and T cells	PE	100 tests	<b>130-092-680</b>
			APC	100 tests	<b>130-092-681</b>
			Biotin	100 tests	<b>130-092-898</b>
pure	100 µg in 1 mL	<b>130-092-679</b>			
<b>CD161 (NKR-P1A)</b>	191B8, mouse IgG2a	Detection of CD161 (NKR-P1A) on human NK cells and subsets of T cells	FITC	100 tests	<b>130-092-907</b>
			PE	100 tests	<b>130-092-677</b>
			APC	100 tests	<b>130-092-678</b>
			Biotin	100 tests	<b>130-092-906</b>
			pure	100 µg in 1 mL	<b>130-092-676</b>
<b>CD197 (CCR7)</b>	FR11-11E8, mouse IgG1	Detection of chemokine receptor CCR7 on human cells	PE	100 tests	<b>130-093-621</b>
			APC	100 tests	<b>130-093-624</b>
			pure	100 µg in 1 mL	<b>130-093-626</b>
<b>CD203c</b>	FR3-16A11, mouse IgG1	Detection of human basophils and mast cells	PE	100 tests	<b>130-092-343</b>
			APC	100 tests	<b>130-092-344</b>
			Biotin	100 tests	<b>130-092-345</b>
			pure	100 µg in 1 mL	<b>130-092-392</b>
<b>CD206</b>	DCN228, mouse IgG1	Detection of human CD206 <sup>+</sup> cells	FITC	100 tests	<b>130-095-131</b>
			PE	100 tests	<b>130-095-220</b>
			APC	100 tests	<b>130-095-217</b>
			Biotin	100 tests	<b>130-095-214</b>

# MACS® Products for flow cytometry

Product	Clone Isotype	Brief description	Conjugate	Capacity <sup>1</sup> / content	Order no.
<b>Antibodies - Human</b> (continued)					
<b>CD209 (DC-SIGN)</b>	DCN47.5, mouse IgG1	Detection of CD209 (DC-SIGN ) on human cells	FITC	100 tests	<b>130-092-873</b>
			PE	100 tests	<b>130-092-869</b>
			APC	100 tests	<b>130-092-871</b>
			Biotin	100 tests	<b>130-092-875</b>
			pure	100 µg in 1 mL	<b>130-092-877</b>
<b>CD226 (DNAM-1)</b>	DX11, mouse IgG1	Detection of DNAM-1 on human NK cells and on subsets of lymphocytes and monocytes	PE	100 tests	<b>130-092-476</b>
			APC	100 tests	<b>130-092-477</b>
			Biotin	100 tests	<b>130-092-478</b>
			pure	100 µg in 1 mL	<b>130-092-479</b>
<b>CD271 (LNGFR)</b>	ME20.4-1.H4, mouse IgG1	Detection of human CD271 (LNGFR) <sup>+</sup> cells	FITC <sup>7</sup>	100 tests	<b>130-091-917</b>
			PE <sup>7</sup>	100 tests	<b>130-091-885</b>
			APC <sup>7</sup>	100 tests	<b>130-091-884</b>
			Biotin <sup>7</sup>	100 tests	<b>130-091-883</b>
<b>CD279</b>	PD1.3.1.3, mouse IgG2b	Detection of human CD279 <sup>+</sup> cells	PE	100 tests	<b>Coming soon</b> <b>130-096-164</b>
			APC	100 tests	<b>Coming soon</b> <b>130-096-166</b>
			Biotin	100 tests	<b>Coming soon</b> <b>130-096-162</b>
<b>CD279 – functional grade</b>	PD1.3.1.3, mouse IgG2b	Functional grade antibodies for <i>in vitro</i> assays, e.g., blocking of CD279	pure	500 µg in 0.5 mL	<b>Coming soon</b> <b>130-096-168</b>
<b>CD284</b>	HTA125, mouse IgG2a	Detection of human CD284 <sup>+</sup> cells	PE	100 tests	<b>NEW</b> <b>130-096-237</b>
			APC	100 tests	<b>NEW</b> <b>130-096-236</b>
<b>CD294 (CRTH2)</b>	BM16, rat IgG2a	Detection of human Th2 cells	PE	100 tests	<b>130-091-238</b>
			Biotin	100 tests	<b>130-091-239</b>
<b>CD303 (BDCA-2)</b>	AC144, mouse IgG1	Detection of human plasmacytoid dendritic cells in blood, lymphoid, and non-lymphoid tissues	FITC <sup>7</sup>	100 tests	<b>130-090-510</b>
			PE <sup>7</sup>	100 tests	<b>130-090-511</b>
			APC <sup>7</sup>	100 tests	<b>130-090-905</b>
			Biotin <sup>7</sup>	100 tests	<b>130-090-691</b>
			pure <sup>7</sup>	100 µg in 1 mL	<b>130-090-690</b>
<b>CD304 (BDCA-4/ Neuropilin-1)</b>	AD5-17F6, mouse IgG1	Detection of human plasmacytoid dendritic cells in blood and bone marrow	PE <sup>7</sup>	100 tests	<b>130-090-533</b>
			APC <sup>7</sup>	100 tests	<b>130-090-900</b>
			Biotin <sup>7</sup>	100 tests	<b>130-090-748</b>
			pure <sup>7</sup>	100 µg in 1 mL	<b>130-090-693</b>
<b>CD309 (VEGFR-2/KDR)</b>	ES8-20E6, mouse IgG1	Detection of CD309 (VEGFR/KDR) on human angioblasts, endothelial progenitor cells, mature endothelial cells and a subset of hematopoietic stem cells	APC	100 tests	<b>130-093-601</b>
			Biotin	100 tests	<b>130-093-603</b>
			PE	100 tests	<b>NEW</b> <b>130-093-598</b>
			pure	100 µg in 1 mL	<b>NEW</b> <b>130-095-324</b>
<b>CD314 (NKG2D)</b>	BAT221, mouse IgG1	Detection of NKG2D on NK cells and subsets of T cells	PE	100 tests	<b>130-092-672</b>
			APC	100 tests	<b>130-092-673</b>
			Biotin	100 tests	<b>130-092-825</b>
			pure	100 µg in 1 mL	<b>130-092-686</b>
<b>CD324 (E-Cadherin)</b>	67A4, mouse IgG1	Characterization of human embryonic stem cells and iPS cells	PE	100 tests <sup>4</sup>	<b>130-095-413</b>
			APC	100 tests <sup>4</sup>	<b>130-095-412</b>

# MACS® Products for flow cytometry

Product	Clone Isotype	Brief description	Conjugate	Capacity <sup>1/</sup> content	Order no.
<b>Antibodies · Human (continued)</b>					
<b>CD326 (EpCAM)</b>	HEA-125, mouse IgG1	Detection of normal and malignant human epithelial cells	FITC	100 tests	<b>130-080-301</b>
			PE	100 tests	<b>130-091-253</b>
			APC	100 tests	<b>130-091-254</b>
<b>CD335 (NKp46)</b>	9E2, mouse IgG1	Detection of the natural cytotoxicity receptor (NCR) NKp46 on human NK cells	PE	100 tests	<b>130-092-607</b>
			APC	100 tests	<b>130-092-609</b>
			Biotin	100 tests	<b>130-093-399</b>
			pure	100 µg in 1 mL	<b>130-092-608</b>
<b>CD335 (NKp46) – functional grade</b>	9E2, mouse IgG1	Functional grade antibodies for <i>in vitro</i> assays, e.g., NK cell activation	Biotin	100 µg in 1 mL	<b>130-094-659</b>
			pure	100 µg in 1 mL	<b>130-094-271</b>
<b>CD336 (NKp44)</b>	2.29, mouse IgG1	Detection of the natural cytotoxicity receptor (NCR) NKp44 on activated human NK cells	PE	100 tests	<b>130-092-480</b>
			APC	100 tests	<b>130-092-481</b>
			Biotin	100 tests	<b>130-092-482</b>
			pure	100 µg in 1 mL	<b>130-092-556</b>
<b>CD337 (NKp30)</b>	AF29-4D12, mouse IgG1	Detection of the natural cytotoxicity receptor (NCR) NKp30 on human NK cells	PE	100 tests	<b>130-092-483</b>
			APC	100 tests	<b>130-092-484</b>
			Biotin	100 tests	<b>130-092-553</b>
			pure	100 µg in 1 mL	<b>130-092-554</b>
<b>CD337 (NKp30) – functional grade</b>	AF29-4D12, mouse IgG1	Functional grade antibodies for <i>in vitro</i> assays, e.g., NK cell activation	pure	100 µg in 1 mL	<b>130-094-272</b>

## Kits for cell detection and enumeration · Human

<b>Blood Dendritic Cell Enumeration Kit</b>	Identification and enumeration of dendritic cells and dendritic cell subsets in human whole blood and PBMCs		50 tests <sup>2</sup>	<b>NEW</b>	<b>130-091-086</b>
			100 tests <sup>2</sup>		<b>130-091-324</b>
<b>CD4<sup>+</sup> RTE Enumeration Kit</b>	Identification and enumeration of CD4 <sup>+</sup> Recent Thymic Emigrants from human whole blood or PBMCs		50 tests <sup>3</sup>	<b>NEW</b>	<b>130-092-055</b>
			100 tests		<b>130-092-056</b>
<b>Treg Detection Kit</b>	Kit for flow cytometric detection of human CD4 <sup>+</sup> CD25 <sup>+</sup> FoxP3 <sup>+</sup> cells	PE	100 tests <sup>4</sup>	<b>NEW</b>	<b>130-094-163</b>
		APC	100 tests <sup>4</sup>		<b>130-094-158</b>
<b>Treg Detection Kit (CD4/CD25/CD127)</b>	One reagent solution for identification of Treg cells from PBMC, whole blood, apheresis, or cord blood		25 tests	<b>NEW</b>	<b>130-096-076</b>
			100 tests		<b>130-096-082</b>
<b>EPC Enrichment and Enumeration Kit</b>	Enumeration of endothelial progenitor cells based on CD34 <sup>+</sup> CD133 <sup>+</sup> CD309 (VEGFR-2/KDR) <sup>+</sup>		20 tests <sup>6</sup>		<b>130-093-477</b>
<b>Mo-DC Differentiation Inspector</b>	Antibody cocktail for the evaluation of the differentiation stage of monocyte-derived dendritic cells		100 tests		<b>130-093-567</b>
<b>MSC Phenotyping Kit</b>	Identification and phenotyping of cultured mesenchymal stromal cells (MSCs)		50 tests <sup>4</sup>		<b>130-095-198</b>
<b>cEC Enrichment &amp; Enumeration Kit</b>	Enumeration of rare circulating endothelial cells (cEC) from peripheral blood		20 tests	<b>Coming soon</b>	<b>130-096-170</b>

# MACS® Products for flow cytometry

Product	Clone Isotype	Brief description	Conjugate	Capacity <sup>1</sup> / content	Order no.
<b>MC CD3 Pan T Cell Cocktail</b>		For control staining of human T cells after separation with either CD3 MicroBeads or the Pan T Cell Isolation Kit II		50 tests	<b>130-092-881</b>
<b>MC CD4 T Cell Cocktail</b>		For control staining of human T helper cells after separation with either CD4 MicroBeads or the CD4 <sup>+</sup> T Cell Isolation Kit II		50 tests	<b>130-092-914</b>
<b>MC CD8 T Cell Cocktail</b>		For control staining of human cytotoxic T cells after separation with either CD8 MicroBeads or the CD8 <sup>+</sup> T Cell Isolation Kit		50 tests	<b>130-092-912</b>
<b>MC CD14 Monocyte Cocktail</b>		For control staining of human monocytes after isolation with either CD14 MicroBeads or the CD14 Monocyte Isolation Kit II		50 tests	<b>130-092-859</b>
<b>MC CD19 B Cell Cocktail</b>		For control staining of human B cells after isolation with either CD19 MicroBeads, CD20 MicroBeads, or the B Cell Isolation Kit II		50 tests	<b>130-092-860</b>
<b>MC CD34 Stem Cell Cocktail</b>		For control staining of human stem cells after isolation with either the CD34 MicroBead Kit or the Indirect CD34 MicroBead Kit		50 tests	<b>130-093-427</b>
<b>MC CD34/CD133 Stem Cell Cocktail</b>		For control staining of human stem cells after isolation with the CD133 MicroBead Kit		50 tests	<b>130-092-882</b>

## Products for cytokine detection · Human

<b>IFN-α Secretion Assay</b>		Detection Kit	PE	100 tests <sup>4</sup>	<b>130-094-161</b>
<b>IFN-γ Secretion Assay</b>		Detection Kit	FITC	100 tests <sup>4</sup>	<b>130-090-433</b>
			PE	100 tests <sup>4</sup>	<b>130-054-202</b>
			APC	100 tests <sup>4</sup>	<b>130-090-762</b>
<b>IL-2 Secretion Assay</b>		Detection Kit	PE	100 tests <sup>4</sup>	<b>130-090-487</b>
			APC	100 tests <sup>4</sup>	<b>130-090-763</b>
<b>IL-4 Secretion Assay</b>		Detection Kit	PE	100 tests <sup>4</sup>	<b>130-054-102</b>
<b>IL-5 Secretion Assay</b>		Detection Kit	PE	100 tests <sup>4</sup>	<b>130-091-623</b>
			APC	100 tests <sup>4</sup>	<b>130-091-624</b>
<b>IL-10 Secretion Assay</b>		Detection Kit	PE	100 tests <sup>4</sup>	<b>130-090-434</b>
			APC	100 tests <sup>4</sup>	<b>130-090-761</b>
<b>IL-12 Secretion Assay</b>		Detection Kit	PE	100 tests <sup>4</sup>	<b>130-092-124</b>
<b>IL-13 Secretion Assay</b>		Detection Kit	PE	100 tests <sup>4</sup>	<b>130-093-479</b>
<b>IL-17 Secretion Assay</b>		Detection of viable human IL-17- secreting cells	PE	100 tests	<b>130-094-537</b>
			APC	100 tests	<b>130-094-536</b>
<b>TNF-α Secretion Assay</b>		Detection Kit	PE	100 tests <sup>4</sup>	<b>130-091-268</b>
			APC	100 tests <sup>4</sup>	<b>130-091-267</b>
<b>Anti-IFN-α</b>	LT27:295, mouse IgG1	Intracellular staining of IFN-α- producing cells	FITC	100 tests	<b>130-092-600</b>
			PE	100 tests	<b>130-092-601</b>
			APC	100 tests	<b>130-092-602</b>
			pure	100 µg in 1 mL	<b>130-092-604</b>

# MACS® Products for flow cytometry

Product	Clone Isotype	Brief description	Conjugate	Capacity <sup>1</sup> / content		Order no.
<b>Products for cytokine detection · Human (continued)</b>						
<b>Anti-IFN-γ</b>	45-15, mouse IgG1	Intracellular staining of IFN-γ- producing cells	FITC	100 tests		<b>130-091-641</b>
			PE	100 tests		<b>130-091-653</b>
			APC	100 tests		<b>130-091-640</b>
<b>Anti-IFN-γ – functional grade</b>	45-15, mouse IgG1	Functional grade antibodies for <i>in vitro</i> assays, e.g., neutralization of IFN-γ activity	pure	500 µg in 0.5 mL	<b>NEW</b>	<b>130-095-743</b>
<b>Anti-IL-2</b>	N7.48A, mouse IgG2a	Intracellular staining of IL-2- producing cells	PE	100 tests		<b>130-091-646</b>
			APC	100 tests		<b>130-091-644</b>
<b>Anti-IL-4</b>	7A3-3, mouse IgG1	Intracellular staining of IL-4- producing cells	PE	100 tests		<b>130-091-647</b>
<b>Anti-IL-4 – functional grade</b>	7A3-3, mouse IgG1	Functional grade antibodies for <i>in vitro</i> assays, e.g., neutralization of IL-4 activity	pure	500 µg in 0.5 mL	<b>NEW</b>	<b>130-095-753</b>
<b>Anti-IL-5</b>	JES1-39D10, rat IgG2a	Intracellular staining of IL-5- producing cells	PE	100 tests		<b>130-091-648</b>
			APC	100 tests		<b>130-091-834</b>
<b>Anti-IL-10</b>	JES3-9D7, rat IgG1	Intracellular staining of IL-10- producing cells	PE	100 tests		<b>130-096-043</b>
			APC	100 tests		<b>130-096-042</b>
<b>Anti-IL-12 (p35/p70)</b>	B-T21, mouse IgG1	Intracellular staining of IL-12- producing cells	PE	100 tests		<b>130-093-432</b>
			APC	100 tests		<b>130-093-431</b>
<b>Anti-IL-12 (p40/p70)</b>	8.6, mouse IgG1	Intracellular staining of IL-12- producing cells	PE	100 tests		<b>130-092-774</b>
			APC	100 tests		<b>130-092-775</b>
<b>Anti-IL-12 (p40/p70) – functional grade</b>	8.6, mouse IgG1	Functional grade antibodies for <i>in vitro</i> assays, e.g., neutralization of IL-12 activity	pure	500 µg in 0.5 mL	<b>NEW</b>	<b>130-095-755</b>
<b>Anti-IL-13</b>	JES10-5A2.2, rat IgG1	Intracellular staining of IL-13- producing cells	PE	100 tests		<b>130-092-964</b>
<b>Anti-IL-13 – functional grade</b>	JES10-5A2.2, rat IgG1	Functional grade antibodies for <i>in vitro</i> assays, e.g., neutralization of IL-13 activity	pure	500 µg in 0.5 mL	<b>Coming soon</b>	<b>130-096-210</b>
<b>Anti-IL-17A</b>	CZ8-23G1 Mouse IgG1	Intracellular staining of IL-17A- producing cells	FITC	100 tests		<b>130-094-520</b>
			PE	100 tests		<b>130-094-521</b>
			APC	100 tests		<b>130-094-519</b>
<b>Anti-TNF-α</b>	cA2, human IgG1	Intracellular staining of TNF-α- producing cells	FITC	100 tests		<b>130-091-650</b>
			PE	100 tests		<b>130-091-651</b>
			APC	100 tests		<b>130-091-649</b>
<b>Anti-TNF-α – functional grade</b>	cA2, human IgG1	Functional grade antibodies for <i>in vitro</i> assays, e.g., neutralization of TNF-α activity	pure	500 µg in 0.5 mL	<b>NEW</b>	<b>130-095-749</b>
<b>CD154/IFN-γ/CD4 Detection Kit</b>		Kit for intracellular cytokine staining of activated, antigen-specific T cells		100 tests <sup>4</sup>		<b>130-092-814</b>
<b>CD154/IL-2/CD4 Detection Kit</b>		Kit for intracellular cytokine staining of activated, antigen-specific T cells		100 tests <sup>4</sup>		<b>130-092-818</b>
<b>CD154/IL-4/CD4 Detection Kit</b>		Kit for intracellular cytokine staining of activated, antigen-specific T cells		100 tests <sup>4</sup>		<b>130-092-817</b>
<b>CD154/IL-5/CD4 Detection Kit</b>		Kit for intracellular cytokine staining of activated, antigen-specific T cells		100 tests <sup>4</sup>		<b>130-092-812</b>
<b>CD154/TNF-α/CD4 Detection Kit</b>		Kit for intracellular cytokine staining of activated, antigen-specific T cells		100 tests <sup>4</sup>		<b>130-092-813</b>

# MACS® Products for flow cytometry

Product	Clone Isotype	Brief description	Conjugate	Capacity <sup>1</sup> / content	Order no.
<b>CD326 (EpCAM) Tumor Cell Enrichment and Detection Kit</b>		Positive selection of human HEA (EpCAM)+ epithelial tumor cells followed by immunocytochemical staining of intracellular cytokeratins		20 tests <sup>5</sup>	<b>130-090-500</b>
<b>ErbB-2 Tumor Cell Enrichment and Detection Kit</b>		Positive selection of human ErbB-2 (HER-2/neu)+ epithelial tumor cells followed by immunocytochemical staining of intracellular cytokeratins		20 tests <sup>5</sup>	<b>130-090-499</b>
<b>Carcinoma Cell Detection Kit</b>		Detection of cytokeratin-expressing human epithelial tumor cells		100 tests <sup>4</sup>	<b>130-090-463</b>
<b>Carcinoma Cell Enrichment and Detection Kit – Immunocytochemistry</b>		Positive selection and subsequent detection of human cytokeratin-expressing epithelial tumor cells		up to 60 tests <sup>5</sup>	<b>130-060-301</b>
<b>Melanoma Cell Enrichment and Detection Kit</b>		Enrichment of and immunocytochemical detection of melanoma cells		20 tests <sup>5</sup>	<b>130-090-523</b>

## Isotype control antibodies

<b>Mouse IgG1 – isotype control antibodies</b>	IS5-21F5, mouse IgG1	Flow cytometric analysis of human cells	FITC	100 tests	<b>130-092-213</b>
			PE	100 tests	<b>130-092-212</b>
			APC	100 tests	<b>130-092-214</b>
			Biotin	100 tests	<b>130-093-018</b>
			VioBlue	100 tests	<b>130-094-670</b>
			PerCP	100 tests	<b>130-094-968</b>
<b>Mouse IgG2a – isotype control antibodies</b>	S43.10, mouse IgG2a	Flow cytometric analysis of human cells	FITC	100 tests	<b>130-091-837</b>
			PE	100 tests	<b>130-091-835</b>
			APC	100 tests	<b>130-091-836</b>
			VioBlue	100 tests	<b>130-094-671</b>
			PerCP	100 tests	<b>130-094-967</b>
<b>Mouse IgG2b – isotype control antibodies</b>	IS6-11E5.11, mouse IgG2b	Flow cytometric analysis of human cells	FITC	100 tests	<b>130-092-216</b>
			PE	100 tests	<b>130-092-215</b>
			APC	100 tests	<b>130-092-217</b>
			Biotin	100 tests	<b>130-092-466</b>
<b>Mouse IgM – isotype control antibodies</b>	IS5-20C4, mouse IgM	Flow cytometric analysis of human cells	FITC	100 tests	<b>130-093-178</b>
			PE	100 tests	<b>130-093-177</b>
			APC	100 tests	<b>130-093-176</b>
			Biotin	100 tests	<b>130-093-175</b>

# MACS® Products for flow cytometry

Product	Clone Isotype	Brief description	Conjugate	Capacity <sup>1/</sup> content	Order no.
<b>Anti-FoxP3</b>	3G3, mouse IgG1	Intracellular staining of FoxP3 <sup>+</sup> human, mouse, or non-human primate cells	PE	100 tests	<b>130-093-014</b>
			APC	100 tests	<b>130-093-013</b>
<b>Anti-HLA-DR</b>	AC122, mouse IgG2a	Detection of antigen-presenting cells	FITC	100 tests	<b>NEW</b> <b>130-095-295</b>
			PE	100 tests	<b>NEW</b> <b>130-095-298</b>
			APC	100 tests	<b>NEW</b> <b>130-095-297</b>
			VioBlue	100 tests	<b>NEW</b> <b>130-095-293</b>
			PerCP	100 tests	<b>NEW</b> <b>130-095-291</b>
<b>Anti-Igλ Light Chain</b>	IS7-24C7, mouse IgG1	Detection of immunoglobulins with λ light chains	FITC	100 tests	<b>130-093-040</b>
			PE	100 tests	<b>130-093-039</b>
			APC	100 tests	<b>130-093-038</b>
			Biotin	100 tests	<b>130-093-025</b>
			pure	100 µg in 1 mL	<b>130-093-024</b>
<b>Anti-iNKT</b>	6B11, mouse IgG1	Detection of human invariant NKT cells expressing the T cell receptor Vα24-Jα18 combined with Vβ11	PE	100 tests	<b>130-094-838</b>
			APC	100 tests	<b>130-094-839</b>
			Biotin	100 tests	<b>130-094-841</b>
<b>Anti-iNKT – functional grade</b>	6B11, mouse IgG1	Specific activation and expansion of iNKT cells	pure	100 µg in 1 mL	<b>130-094-865</b>
<b>Anti-NKp80</b>	4A4.D10, mouse IgG1	Detection of NKp80 (KLRF1), expressed on all human NK cells and a small subset of T cells	FITC	100 tests	<b>130-094-843</b>
			PE	100 tests	<b>130-094-844</b>
			APC	100 tests	<b>130-094-845</b>
			Biotin	100 tests	<b>130-095-114</b>
			pure	100 µg in 1 mL	<b>130-094-846</b>
<b>Anti-KIR2D</b>	NKVFS1, mouse IgG1	Detection of KIR receptors on non-human primate NK cells	PE	100 tests	<b>130-092-688</b>
			APC	100 tests	<b>130-092-687</b>
			Biotin	100 tests	<b>130-092-904</b>
			pure	100 µg in 1 mL	<b>130-092-689</b>
<b>CD1c (BDCA-1)</b>	AD5-8E7, mouse IgG2a	Detection of myeloid non-human primate blood dendritic cells	FITC <sup>7</sup>	100 tests	<b>130-090-507</b>
			PE	100 tests	<b>130-090-508</b>
			APC	100 tests	<b>130-090-903</b>
			Biotin <sup>7</sup>	100 tests	<b>130-090-692</b>
			pure <sup>7</sup>	100 µg in 1 mL	<b>130-090-695</b>
<b>CD2</b>	LT2, mouse IgG2b	Detection of non-human primate T and NK cells	PE	100 tests	<b>130-091-115</b>
<b>CD2 – functional grade</b>	LT2, mouse IgG2b	Functional grade antibody for T cell activation and expansion	Biotin	100 µg in 1 mL	<b>130-093-376</b>
<b>CD3</b>	10D12, mouse IgG1	Detection of CD3 <sup>+</sup> non-human primate cells	PE <sup>7</sup>	100 tests	<b>130-092-009</b>
			APC <sup>7</sup>	100 tests	<b>130-091-998</b>
			Biotin <sup>7</sup>	100 tests	<b>130-092-008</b>
<b>CD4</b>	M-T466, mouse IgG1	Detection of non-human primate T helper cells	FITC	100 tests	<b>130-080-501</b>
			PE	100 tests	<b>130-091-231</b>
			APC	100 tests	<b>130-091-232</b>

# MACS® Products for flow cytometry

Product	Clone Isotype	Brief description	Conjugate	Capacity <sup>1</sup> / content	Order no.
<b>Antibodies · Non-human primate (continued)</b>					
<b>CD6</b>	M-T411, mouse IgG1	Detection of CD6 <sup>+</sup> non-human primate cells	FITC <sup>7</sup>	100 tests	<b>130-091-482</b>
			PE	100 tests	<b>130-091-233</b>
			APC	100 tests	<b>130-091-234</b>
<b>CD8</b>	BW135/80, mouse IgG2a	Detection of CD8 <sup>+</sup> non-human primate cells	FITC	100 tests	<b>130-080-601</b>
			PE	100 tests	<b>130-091-084</b>
			APC	100 tests	<b>130-091-076</b>
			VioBlue	100 tests	<b>130-094-152</b>
			PerCP	100 tests	<b>130-094-972</b>
<b>CD11b</b>	M1/70.15.11.5, rat IgG2b	Detection of CD11b <sup>+</sup> non-human primate cells	FITC	100 tests	<b>130-081-201</b>
			PE	100 tests	<b>130-091-240</b>
			APC	100 tests	<b>130-091-241</b>
<b>CD14</b>	TÜK4, mouse IgG2a	Detection of non-human primate monocytes	FITC	100 tests	<b>130-080-701</b>
			PE	100 tests	<b>130-091-242</b>
			APC	100 tests	<b>130-091-243</b>
			VioBlue	100 tests	<b>130-094-364</b>
			PerCP	100 tests	<b>130-094-969</b>
<b>CD16</b>	VEP13, mouse IgM	Detection of CD16 <sup>+</sup> non-human primate cells	FITC	100 tests	<b>130-091-244</b>
			PE	100 tests	<b>130-091-245</b>
			APC	100 tests	<b>130-091-246</b>
<b>CD20</b>	LT20, mouse IgG1	Detection of non-human primate B cells	FITC	100 tests	<b>130-091-108</b>
			PE	100 tests	<b>130-091-109</b>
			VioBlue	100 tests	<b>130-094-167</b>
			PerCP	100 tests	<b>130-094-976</b>
<b>CD25</b>	4E3, mouse IgG2b	Detection of CD25 <sup>+</sup> non-human primate cells	PE	100 tests	<b>130-091-024</b>
			APC	100 tests	<b>130-092-858</b>
			Biotin	100 tests	<b>130-091-235</b>
<b>CD27</b>	M-T271, mouse IgG1	Detection of CD27 on non-human primate T, B, and NK cells	FITC	100 tests	<b>130-093-184</b>
			PE	100 tests	<b>130-093-185</b>
			APC	100 tests	<b>130-093-186</b>
			Biotin	100 tests	<b>130-093-196</b>
<b>CD28</b>	15E8, mouse IgG1	Detection of CD28 on non-human primate leukocytes	PE	100 tests	<b>130-092-921</b>
			APC	100 tests	<b>130-092-923</b>
			Biotin	100 tests	<b>130-092-955</b>
<b>CD28 – functional grade</b>	15E8, mouse IgG1	Functional grade antibody for T cell activation and expansion	Biotin	100 µg in 1 mL	<b>130-093-386</b>
			pure	100 µg in 1 mL	<b>130-093-375</b>
<b>CD31</b>	AC128, mouse IgG1	Detection of CD31 on non-human primate cells	FITC	100 tests	<b>130-092-654</b>
			PE	100 tests	<b>130-092-653</b>
			APC	100 tests	<b>130-092-652</b>
<b>CD33</b>	AC104.3E3, mouse IgG1	Detection of non-human primate myeloid cells	PE	100 tests	<b>130-091-732</b>
			APC <sup>7</sup>	100 tests	<b>130-091-731</b>

# MACS® Products for flow cytometry

Product	Clone Isotype	Brief description	Conjugate	Capacity <sup>1</sup> / content	Order no.
<b>Antibodies · Non-human primate (continued)</b>					
<b>CD39</b>	MZ18-23C8, mouse IgG1	Detection of CD39 <sup>+</sup> regulatory T cells and other CD39-expressing cells	FITC	100 tests	<b>130-093-502</b>
			PE	100 tests	<b>130-093-503</b>
			APC	100 tests	<b>130-093-504</b>
			Biotin	100 tests	<b>130-093-505</b>
			pure	100 µg in 1 mL	<b>130-093-506</b>
<b>CD40</b>	HB14, mouse IgG1	Detection of CD40 on B cells, macrophages, follicular dendritic cells, and a subset of peripheral T cells	PE	100 tests	<b>130-094-135</b>
			APC	100 tests	<b>130-094-137</b>
			Biotin	100 tests	<b>130-094-142</b>
<b>CD40 – functional grade</b>	HB14, mouse IgG1	Unconjugated antibody for blocking of CD40-CD154 interaction	pure	100 µg in 1 mL	<b>130-094-133</b>
<b>CD45</b>	MB4-6D6, mouse IgG1	Detection of non-human primate leukocytes	FITC	100 tests	<b>130-091-898</b>
			PE	100 tests	<b>130-091-897</b>
			APC	100 tests	<b>130-091-900</b>
			Biotin	100 tests	<b>130-091-901</b>
<b>CD45RA</b>	T6D11, mouse IgG2b	Detection of non-human primate CD45RA <sup>+</sup> cells	FITC	100 tests	<b>130-092-247</b>
			PE	100 tests	<b>130-092-248</b>
			APC	100 tests	<b>130-092-249</b>
			VioBlue	100 tests	<b>NEW</b> <b>130-095-464</b>
			PerCP	100 tests	<b>NEW</b> <b>130-095-466</b>
			Biotin	100 tests	<b>NEW</b> <b>130-096-259</b>
<b>CD49d</b>	MZ18-24A9, Mouse IgG2b	Detection of CD49d on non-human primate cells	FITC	100 tests	<b>130-093-283</b>
			PE	100 tests	<b>130-093-282</b>
			APC	100 tests	<b>130-093-281</b>
			Biotin	100 tests	<b>130-093-280</b>
			pure	100 µg in 1 mL	<b>130-093-279</b>
<b>CD56</b>	AF12-7H3, mouse IgG1	Detection of CD56 <sup>+</sup> non-human primate cells	PE <sup>7</sup>	100 tests	<b>130-090-755</b>
			APC <sup>7</sup>	100 tests	<b>130-090-843</b>
			pure <sup>7</sup>	50 µg in 1 mL	<b>130-090-955</b>
<b>CD61</b>	Y2/51, mouse IgG1	Detection of non-human primate megakaryocytes and platelets	PE	100 tests	<b>130-081-501</b>
<b>CD66abce</b>	TET2, mouse IgG2b	Detection of CD66abce expression on non-human primate granulocytes	FITC	100 tests	<b>130-093-132</b>
			PE	100 tests	<b>130-093-133</b>
			APC	100 tests	<b>130-093-155</b>
			Biotin	100 tests	<b>130-093-156</b>
<b>CD69</b>	FN50, mouse IgG1	Detection of CD69 <sup>+</sup> non-human primate cells	FITC	100 tests	<b>130-092-166</b>
			PE	100 tests	<b>130-092-160</b>
			APC	100 tests	<b>130-092-159</b>
			Biotin	100 tests	<b>130-092-161</b>
<b>CD86</b>	FM95, mouse IgG1	Detection of CD86 <sup>+</sup> monocytes, monitoring of DC maturation	FITC	100 tests	<b>130-094-878</b>
			PE	100 tests	<b>130-094-877</b>
			APC	100 tests	<b>130-094-876</b>

# MACS® Products for flow cytometry

Product	Clone Isotype	Brief description	Conjugate	Capacity <sup>1</sup> / content	Order no.
<b>Antibodies - Non-human primate (continued)</b>					
<b>CD95</b>	DX2, mouse IgG1	Detection of CD95 on non-human primate cells	FITC	100 tests	<b>130-092-415</b>
			PE	100 tests	<b>130-092-416</b>
			APC	100 tests	<b>130-092-417</b>
			Biotin	100 tests	<b>130-092-418</b>
<b>CD127</b>	MB15-18C9, mouse IgG2a	Detection of human CD127 <sup>+</sup> T cells, e.g. memory CD8 T cell precursors or CD127 <sup>-</sup> regulatory T cells	FITC	100 tests	<b>130-094-888</b>
			PE	100 tests	<b>130-094-889</b>
			APC	100 tests	<b>130-094-890</b>
			Biotin	100 tests	<b>130-094-891</b>
			pure	100 µg in 1 mL	<b>130-094-942</b>
<b>CD137</b>	4B4-1, mouse IgG1	Detection of activated antigen-specific CD137 <sup>+</sup> T cells	PE	100 tests	<b>130-093-475</b>
			APC	100 tests	<b>130-094-821</b>
			Biotin	100 tests	<b>130-094-824</b>
<b>CD154</b>	5C8, mouse IgG2a	Detection of activated CD4 <sup>+</sup> T cells	PE	100 tests	<b>130-092-289</b>
			APC	100 tests	<b>130-092-290</b>
			Biotin	100 tests	<b>130-092-690</b>
<b>CD226 (DNAM-1)</b>	DX11, mouse IgG1	Detection of DNAM-1 on non-human primate cells	PE	100 tests	<b>130-092-476</b>
			APC	100 tests	<b>130-092-477</b>
			Biotin	100 tests	<b>130-092-478</b>
			pure	100 µg in 1 mL	<b>130-092-479</b>
<b>CD314 (NKG2D)</b>	BAT221, mouse IgG1	Detection of NKG2D <sup>+</sup> non-human primate cells	PE	100 tests	<b>130-092-672</b>
			APC	100 tests	<b>130-092-673</b>
			Biotin	100 tests	<b>130-092-825</b>
			pure	100 µg in 1 mL	<b>130-092-686</b>
<b>CD337 (NKp30)</b>	AF29-4D12, mouse IgG1	Detection of CD337 (NKp30) on non-human primate cells	PE	100 tests	<b>130-092-483</b>
			APC	100 tests	<b>130-092-484</b>
			Biotin	100 tests	<b>130-092-553</b>
			pure	100 µg in 1 mL	<b>130-092-554</b>
<b>CD337 (NKp30) – functional grade</b>	AF29-4D12, mouse IgG1	Functional grade antibodies for <i>in vitro</i> assays, e.g., NK cell activation	pure	100 µg in 1 mL	<b>NEW</b> <b>130-094-272</b>

# MACS® Products for flow cytometry

Product	Clone Isotype	Brief description	Conjugate	Capacity <sup>1</sup> / content	Order no.
---------	---------------	-------------------	-----------	------------------------------------	-----------

## Products for cytokine detection · Non-human primate

<b>Anti-IFN-γ</b>	45-15, mouse IgG1	Intracellular staining of IFN-γ- producing cells	FITC	100 tests	<b>130-091-641</b>
			PE	100 tests	<b>130-091-653</b>
			APC	100 tests	<b>130-091-640</b>
<b>Anti-IL-2</b>	N7.48A, mouse IgG2a	Intracellular staining of IL-2- producing cells	PE	100 tests	<b>130-091-646</b>
			APC	100 tests	<b>130-091-644</b>
<b>Anti-IL-4</b>	7A3-3, mouse IgG1	Intracellular staining of IL-4- producing cells	PE	100 tests	<b>130-091-647</b>
<b>Anti-IL-5</b>	JES1-39D10, rat IgG2a	Intracellular staining of IL-5- producing cells	PE	100 tests	<b>130-091-648</b>
			APC	100 tests	<b>130-091-834</b>
<b>Anti-IL-10</b>	B-T10, mouse IgG2b	Intracellular staining of IL-10- producing cells	PE	100 tests	<b>130-091-643</b>
			APC	100 tests	<b>130-091-642</b>
<b>Anti-IL-12 (p40/p70)</b>	8.6, mouse IgG1	Intracellular staining of IL-12- producing cells	PE	100 tests	<b>130-092-774</b>
			APC	100 tests	<b>130-092-775</b>
<b>Anti-IL-13</b>	JES10-5A2.2, rat IgG1	Intracellular staining of IL-13- producing cells	PE	100 tests	<b>130-092-964</b>
<b>Anti-IL-17A</b>	CZ8-23G1 Mouse IgG1	Intracellular staining of IL-17A- producing cells	FITC	100 tests	<b>130-094-520</b>
			PE	100 tests	<b>130-094-521</b>
			APC	100 tests	<b>130-094-519</b>

## Antibodies · Mouse

<b>Anti-A2B5</b>	105-HB29, mouse IgM	Detection of A2B5 <sup>+</sup> glial-restricted precursor cells in human, mouse, or rat	PE	100 tests <sup>4</sup>	<b>130-093-581</b>
			APC	100 tests <sup>4</sup>	<b>130-093-582</b>
			Biotin	100 tests <sup>4</sup>	<b>130-093-393</b>
			pure	100 µg in 1 mL	<b>130-093-394</b>
<b>Anti-DCAR1</b>	SKa5-3D5, rat IgG2b	Detection of mouse DCAR1 <sup>+</sup> cells	PE	100 tests	<b>130-095-317</b>
			APC	100 tests	<b>130-095-320</b>
			Biotin	100 tests	<b>130-095-315</b>
<b>Anti-DCIR2</b>	33D1, rat IgG2b	Detection of mouse DCIR2 <sup>+</sup> cells	PE	100 tests	<b>130-095-188</b>
			APC	100 tests	<b>130-095-190</b>
			Biotin	100 tests	<b>130-095-181</b>
<b>Anti-Dectin-2</b>	KVa7-6E7, rat IgG2a	Staining of Dectin-2 <sup>+</sup> mouse cells, detection of mouse Dectin-2 by immunoblot analysis	FITC	100 tests	<b>130-094-480</b>
			pure	100 µg in 1 mL	<b>130-094-481</b>
<b>Anti-DO11.10 TCR</b>	KJ1-26, mouse IgG2a	Detection of transgenic T cells of DO11.10 mice	FITC	100 tests	<b>130-095-306</b>
			PE	100 tests	<b>130-095-309</b>
			APC	100 tests	<b>130-095-311</b>
			VioBlue	100 tests	<b>130-095-313</b>
			Biotin	100 tests	<b>130-095-304</b>
<b>Anti-DO11.10 TCR – functional grade</b>	KJ1-26, mouse IgG2a	Blocking of antigen responses of transgenic T cells of DO11.10 mice	pure	1 mg in 0.5 mL	<b>130-095-379</b>

# MACS® Products for flow cytometry

Product	Clone Isotype	Brief description	Conjugate	Capacity <sup>1</sup> / content	Order no.
<b>Antibodies · Mouse (continued)</b>					
<b>Anti-FoxP3</b>	3G3, mouse IgG1	Intracellular staining of FoxP3 <sup>+</sup> human, mouse, or non-human primate cells	PE	100 tests	<b>130-093-014</b>
			APC	100 tests	<b>130-093-013</b>
<b>Anti-FCεR1a</b>	MAR-1, hamster IgG	Detection of FCεR1a <sup>+</sup> mouse cells	FITC	100 tests	<b>NEW</b> <b>130-095-991</b>
			PE	100 tests	<b>NEW</b> <b>130-095-992</b>
			APC	100 tests	<b>NEW</b> <b>130-095-994</b>
			VioBlue	100 tests	<b>NEW</b> <b>130-096-037</b>
			Biotin	100 tests	<b>NEW</b> <b>130-096-039</b>
<b>Anti-FCεR1a – functional grade</b>	MAR-1, hamster IgG	Unconjugated antibody for <i>in vivo</i> and <i>in vitro</i> functional assays	pure	100 µg in 1 mL	<b>NEW</b> <b>130-096-083</b>
<b>Anti-FR4</b>	TH6, mouse IgG2b	Detection of FR4-positive Treg cells in mice	PE	100 tests	<b>NEW</b> <b>130-095-243</b>
			APC	100 tests	<b>NEW</b> <b>130-095-239</b>
			Biotin	100 tests	<b>NEW</b> <b>130-095-246</b>
<b>Anti-FR4 – functional grade</b>	TH6, mouse IgG2b	Unconjugated antibody for <i>in vivo</i> depletion of mouse Treg cells	pure	1 mg in 0.5 mL	<b>NEW</b> <b>130-095-244</b>
<b>Anti-GITR</b>	DTA-1, rat IgG2b	Detection of mouse regulatory T cells and activated T cells	PE	100 tests	<b>130-092-469</b>
			APC	100 tests	<b>130-092-470</b>
			pure	100 µg in 1 mL	<b>130-092-630</b>
<b>Anti-GITR – functional grade</b>	DTA-1, rat IgG2b	Unconjugated antibody for <i>in vivo</i> and <i>in vitro</i> functional assays	pure	100 µg in 1 mL	<b>130-092-655</b>
				1 mg in 0.5 mL	<b>130-092-656</b>
<b>Anti-GLAST (ACSA-1)</b>	ACSA-1, mouse IgG2a	Identification of GLAST <sup>+</sup> astrocytes by flow cytometry or fluorescence microscopy	PE	100 tests <sup>4</sup>	<b>NEW</b> <b>130-095-821</b>
			APC	100 tests <sup>4</sup>	<b>NEW</b> <b>130-095-814</b>
			Biotin	100 tests <sup>4</sup>	<b>NEW</b> <b>130-095-815</b>
			pure	100 µg in 1 mL	<b>NEW</b> <b>130-095-822</b>
<b>Anti-Gr-1</b>	RB6-8C5, rat IgG2b	Detection of mouse granulocytes and plasmacytoid dendritic cells	FITC	100 tests	<b>130-091-934</b>
			PE	100 tests	<b>130-091-932</b>
			APC	100 tests	<b>130-091-931</b>
			VioBlue	100 tests	<b>130-094-362</b>
			PerCP	100 tests	<b>130-094-958</b>
			Biotin	100 tests	<b>130-091-930</b>
<b>Anti-H-2Kk</b>	H100-27.R55, mouse IgG2a	Detection of H-2K <sup>k</sup> -positive mouse cells or evaluation of cells transfected with pMACS K <sup>k</sup> .II	FITC	100 tests	<b>130-085-101</b>
			PE	100 tests	<b>130-094-867</b>
			APC	100 tests	<b>130-094-873</b>
<b>Anti-IgG1</b>	X-56, rat IgG1	Detection of cells expressing surface IgG1, e.g., mouse memory B cells. Staining of cells labelled with a primary mouse antibody of IgG1 isotype	FITC	100 tests	<b>130-095-897</b>
			PE	100 tests	<b>130-095-900</b>
			APC	100 tests	<b>130-095-902</b>
			Biotin	100 tests	<b>130-095-879</b>
<b>Anti-IgG2ab</b>	X-57, rat IgG1	Detection of cells expressing surface IgG2a and b, e.g., mouse memory B cells. Staining of cells labelled with a primary mouse antibody of IgG2a and b isotype	FITC	100 tests	<b>130-095-875</b>
			PE	100 tests	<b>130-095-877</b>
			APC	100 tests	<b>130-095-880</b>
			Biotin	100 tests	<b>130-095-881</b>

# MACS® Products for flow cytometry

Product	Clone Isotype	Brief description	Conjugate	Capacity <sup>1/</sup> content	Order no.
<b>Antibodies - Mouse (continued)</b>					
<b>Anti-IgM</b>	X-54, rat IgG2a	Detection of IgM <sup>+</sup> mouse B cells, staining of cells labeled with a primary antibody of mouse IgM isotype	FITC	100 tests	<b>130-095-906</b>
			PE	100 tests	<b>130-095-908</b>
			APC	100 tests	<b>130-095-910</b>
			Biotin	100 tests	<b>130-095-904</b>
<b>Anti-Ly-6C</b>	1G7.G10, rat IgG2a	Detection of mouse plasmacytoid dendritic cells as well as monocyte and memory T cells	FITC	100 tests	<b>130-093-134</b>
			PE	100 tests	<b>130-093-135</b>
			APC	100 tests	<b>130-093-136</b>
			Biotin	100 tests	<b>130-093-137</b>
<b>Anti-Ly-6G</b>	1A8, rat IgG2a	Detection of mouse granulocytes	FITC	100 tests	<b>130-093-138</b>
			PE	100 tests	<b>130-093-139</b>
			APC	100 tests	<b>130-093-140</b>
			Biotin	100 tests	<b>130-093-141</b>
<b>Anti-MHC Class II</b>	M5/114.15.2, rat IgG2b	Detection of mouse antigen- presenting cells	FITC	100 tests	<b>130-081-601</b>
			PE	100 tests	<b>130-091-368</b>
			APC	100 tests	<b>130-091-806</b>
<b>Anti-NK1.1</b>	PK136, mouse IgG2a	Detection of mouse NK cells	PE	100 tests	<b>130-095-867</b>
			APC	100 tests	<b>130-095-869</b>
			Biotin	100 tests	<b>130-095-865</b>
<b>Anti-NKp46</b>	29A1.4, rat IgG2a	Detection of NKp46 <sup>+</sup> mouse NK cells	FITC	100 tests	<b>130-095-115</b>
			PE	100 tests	<b>130-095-116</b>
			APC	100 tests	<b>130-095-119</b>
			Biotin	100 tests	<b>130-095-117</b>
			pure	100 µg in 1 mL	<b>130-095-118</b>
<b>Anti-mPDCA-1</b>	JF05-1C2.4.1, rat IgG2b	Detection of mouse plasmacytoid dendritic cells from different tissues	FITC	100 tests	<b>130-091-961</b>
			PE	100 tests	<b>130-091-962</b>
			APC	100 tests	<b>130-091-963</b>
			Biotin	100 tests	<b>130-091-964</b>
			pure	100 µg in 1 mL	<b>130-091-979</b>
<b>Anti-mPDCA-1 – functional grade</b>	JF05-1C2.4.1, rat IgG2b	<i>In vivo</i> depletion of mouse plasmacytoid dendritic cells	pure	1 mg in 0.5 mL	<b>130-091-978</b>
				8 mg in 4 mL	<b>130-092-550</b>
<b>Anti-Prominin-1</b>	MB9-3G8, rat IgG1	Detection of mouse prominin-1 <sup>+</sup> cells	PE	100 tests	<b>130-092-334</b>
			APC	100 tests	<b>130-092-335</b>
			Biotin	100 tests	<b>130-092-441</b>
			pure	100 µg in 1 mL	<b>130-092-442</b>
<b>Anti-PSA-NCAM</b>	2-2B, mouse IgM	Detection of PSA-NCAM <sup>+</sup> neuronal-restricted precursor human, mouse, and rat cells	PE	100 tests <sup>4</sup>	<b>130-093-274</b>
			APC	100 tests <sup>4</sup>	<b>130-093-273</b>
<b>Anti-Ter119</b>	Ter-119, rat IgG2b	Detection of mouse erythrocytes	FITC	100 tests	<b>130-091-786</b>
			PE	100 tests	<b>130-091-783</b>
			APC	100 tests	<b>130-091-788</b>

# MACS® Products for flow cytometry

Product	Clone Isotype	Brief description	Conjugate	Capacity <sup>1/</sup> content	Order no.
<b>Antibodies · Mouse (continued)</b>					
<b>Anti-Sca-1</b>	D7, rat IgG2a	Detection of Sca-1 <sup>+</sup> mouse cells	FITC	100 tests	<b>130-093-222</b>
			PE	100 tests	<b>130-093-224</b>
			APC	100 tests	<b>130-093-223</b>
			Biotin	100 tests	<b>130-093-421</b>
<b>Anti-Siglec-H</b>	551.3D3, rat IgG1	Identification and enumeration of mouse Siglec-H <sup>+</sup> PDCs	PE	100 tests	<b>130-093-508</b>
			ACP	100 tests	<b>130-093-509</b>
			Biotin	100 tests	<b>130-093-510</b>
<b>CD1d</b>	1B1, rat IgG2b	Detection of CD1d <sup>+</sup> mouse cells	FITC	100 tests	<b>NEW</b> <b>130-096-338</b>
			PE	100 tests	<b>NEW</b> <b>130-096-342</b>
			APC	100 tests	<b>NEW</b> <b>130-096-332</b>
			Biotin	100 tests	<b>NEW</b> <b>130-096-302</b>
<b>CD3ε</b>	145-2C11, hamster IgG1	Detection of mouse T cells	FITC	100 tests	<b>130-092-962</b>
			PE	100 tests	<b>130-092-976</b>
			APC	100 tests	<b>130-092-977</b>
			Biotin	100 tests	<b>130-093-021</b>
<b>CD3ε – functional grade</b>	145-2C11, hamster IgG1	Functional grade antibody for T cell activation and expansion	Biotin	100 µg in 1 mL	<b>130-093-179</b>
			pure	500 µg in 1 mL	<b>130-092-973</b>
<b>CD4</b>	GK1.5, rat IgG2b	Detection of mouse T helper cells	FITC	100 tests	<b>130-091-608</b>
			PE	100 tests	<b>130-091-607</b>
			APC	100 tests	<b>130-091-611</b>
			VioBlue	100 tests	<b>NEW</b> <b>130-096-056</b>
<b>CD8a</b>	53-6.7, rat IgG2a	Detection of mouse cytotoxic T cells	FITC	100 tests	<b>130-091-605</b>
			PE	100 tests	<b>130-091-603</b>
			APC	100 tests	<b>130-091-606</b>
			VioBlue	100 tests	<b>130-094-360</b>
			PerCP	100 tests	<b>NEW</b> <b>130-094-960</b>
<b>CD11b</b>	M1/70.15.11.5, rat IgG2b	Detection of mouse and human monocytes and macrophages	FITC	100 tests	<b>130-081-201</b>
			PE	100 tests	<b>130-091-240</b>
			APC	100 tests	<b>130-091-241</b>
<b>CD11c</b>	N418, hamster IgG	Detection of mouse dendritic cells	FITC	100 tests	<b>130-091-842</b>
			PE	100 tests	<b>130-091-830</b>
			APC	100 tests	<b>130-091-844</b>
<b>CD16/32</b>	93, rat IgG2a	Detection of CD16 and CD32 Fc receptors on mouse cells	PE	100 tests	<b>130-092-572</b>
			APC	100 tests	<b>130-092-573</b>
			Biotin	100 tests	<b>130-092-570</b>
			pure	100 µg in 1 mL	<b>130-092-574</b>
<b>CD19</b>	6D5, rat IgG2a	Detection of mouse B cells	FITC <sup>7</sup>	100 tests	<b>130-092-042</b>
			PE	100 tests	<b>130-092-041</b>
			APC	100 tests	<b>130-092-039</b>

# MACS® Products for flow cytometry

Product	Clone Isotype	Brief description	Conjugate	Capacity <sup>1</sup> / content	Order no.
<b>Antibodies - Mouse (continued)</b>					
<b>CD25</b>	7D4, rat IgM	Detection of mouse regulatory T cells, and activated T and B cells	PE	100 tests	<b>130-091-013</b>
			APC	100 tests	<b>130-093-734</b>
			Biotin	100 tests	<b>130-092-569</b>
<b>CD28</b>	37.1, hamster IgG2	Detection of CD28 on mouse leukocytes	PE	100 tests	<b>130-093-180</b>
			Biotin	100 tests	<b>130-093-181</b>
<b>CD28 – functional grade</b>	37.1, hamster IgG2	Functional grade antibody for T cell activation and expansion	Biotin	100 µg in 1 mL	<b>130-093-183</b>
			pure	100 µg in 1 mL	<b>130-093-182</b>
<b>CD29</b>	HMBETA1-1, hamster IgG2/3	Detection of CD29 <sup>+</sup> mouse cells	FITC	100 tests	<b>NEW</b> <b>130-096-309</b>
			PE	100 tests	<b>NEW</b> <b>130-096-306</b>
			APC	100 tests	<b>NEW</b> <b>130-096-356</b>
			Biotin	100 tests	<b>NEW</b> <b>130-096-312</b>
<b>CD40</b>	FGK.45.5, rat IgG2a	Detection of CD40 expression on mouse B cells, macrophages, and dendritic cells	PE	100 tests	<b>130-092-848</b>
			APC	100 tests	<b>130-092-847</b>
			Biotin	100 tests	<b>130-092-846</b>
<b>CD40 – functional grade</b>	FGK.45.5, rat IgG2a	<i>In vivo</i> and <i>in vitro</i> stimulation of mouse CD40-expressing cells	pure	100 µg in 1 mL	<b>130-093-022</b>
			pure	1 mg in 0.5 mL	<b>130-093-023</b>
<b>CD43</b>	L11, rat IgG2a	Detection of mouse CD43 <sup>+</sup> cells and identification of CD43 <sup>-</sup> resting B cells	PE	100 tests	<b>130-091-585</b>
			APC	100 tests	<b>130-091-581</b>
<b>CD45</b>	30F11, rat IgG2b	Detection of mouse leukocytes	FITC	100 tests	<b>130-091-609</b>
			PE	100 tests	<b>130-091-610</b>
			APC	100 tests	<b>130-091-811</b>
			VioBlue	100 tests	<b>130-092-910</b>
			PerCP	100 tests	<b>130-094-962</b>
<b>CD45.1</b>	A20, mouse IgG2a	Detection of mouse CD45.1 <sup>+</sup> cells	FITC	100 tests	<b>NEW</b> <b>130-096-232</b>
			PE	100 tests	<b>NEW</b> <b>130-096-245</b>
			APC	100 tests	<b>NEW</b> <b>130-096-243</b>
			Biotin	100 tests	<b>NEW</b> <b>130-096-246</b>
<b>CD45.2</b>	104, mouse IgG2a	Detection of mouse CD45.2 <sup>+</sup> cells	FITC	100 tests	<b>NEW</b> <b>130-096-242</b>
			PE	100 tests	<b>NEW</b> <b>130-096-241</b>
			APC	100 tests	<b>NEW</b> <b>130-096-244</b>
			Biotin	100 tests	<b>NEW</b> <b>130-096-250</b>
<b>CD45R (B220)</b>	RA3-6B2, rat IgG2a	Detection of mouse B cells	FITC	100 tests	<b>130-091-829</b>
			PE	100 tests	<b>130-091-828</b>
			APC	100 tests	<b>130-091-843</b>
			VioBlue	100 tests	<b>130-094-287</b>
			PerCP	100 tests	<b>130-094-966</b>
<b>CD49b (DX5)</b>	DX5, rat IgM	Detection of mouse NK cells	FITC	100 tests	<b>130-091-814</b>
			PE	100 tests	<b>130-091-816</b>
			APC	100 tests	<b>130-091-813</b>

# MACS® Products for flow cytometry

Product	Clone Isotype	Brief description	Conjugate	Capacity <sup>1</sup> / content		Order no.
<b>Antibodies - Mouse (continued)</b>						
<b>CD49d</b>	R1-2.1, rat IgG2b	Detection of CD49d <sup>+</sup> mouse cells	FITC	100 tests	<b>NEW</b>	<b>130-096-324</b>
			PE	100 tests	<b>NEW</b>	<b>130-096-318</b>
			APC	100 tests	<b>NEW</b>	<b>130-096-330</b>
			VioBlue	100 tests	<b>NEW</b>	<b>130-096-321</b>
			Biotin	100 tests	<b>NEW</b>	<b>130-096-322</b>
<b>CD62L</b>	MEL14-H2.100, rat IgG2a	Detection of mouse L-selectin- expressing cells	FITC <sup>7</sup>	100 tests		<b>130-091-792</b>
			PE	100 tests		<b>130-091-794</b>
			APC	100 tests		<b>130-091-805</b>
<b>CD86</b>	PO3.3, rat IgG2b	Detection of mouse CD86 <sup>+</sup> cells	FITC	100 tests	<b>NEW</b>	<b>130-096-361</b>
			PE	100 tests	<b>NEW</b>	<b>130-096-359</b>
			APC	100 tests	<b>NEW</b>	<b>130-096-357</b>
			VioBlue	100 tests	<b>NEW</b>	<b>130-096-365</b>
			Biotin	100 tests	<b>NEW</b>	<b>130-096-363</b>
<b>CD90.1</b>	His51, mouse IgG2a	Detection of mouse and rat CD90.1 <sup>+</sup> cells	FITC	100 tests		<b>130-094-527</b>
			PE	100 tests		<b>130-094-528</b>
			APC	100 tests		<b>130-094-525</b>
			Biotin	100 tests		<b>130-094-526</b>
			VioBlue	100 tests		<b>130-094-588</b>
			pure	100 µg in 1 mL		<b>130-094-524</b>
<b>CD90.2</b>	30-H12, rat IgG2b	Detection of mouse T cells	FITC	100 tests		<b>130-091-602</b>
			PE	100 tests		<b>130-091-601</b>
			APC	100 tests		<b>130-091-790</b>
			VioBlue	100 tests		<b>130-094-361</b>
			PerCP	100 tests	<b>NEW</b>	<b>130-094-986</b>
<b>CD105</b>	MJ7/18, rat IgG2a	Detection of CD105 <sup>+</sup> mouse cells	PE	100 tests		<b>130-092-929</b>
			APC	100 tests		<b>130-092-930</b>
			Biotin	100 tests		<b>130-092-927</b>
			pure	100 µg in 1 mL		<b>130-092-926</b>
<b>CD117</b>	3C1, rat IgG2b	Detection of mouse CD117 (c-kit) <sup>+</sup> stem cells	PE	100 tests		<b>130-091-730</b>
			APC	100 tests		<b>130-091-729</b>
<b>CD127</b>	A7R34, rat IgG2a	Detection of CD127 <sup>+</sup> cells, e.g., effector memory T cells	PE	100 tests		<b>130-094-577</b>
			Biotin	100 tests		<b>130-094-583</b>
<b>CD127 – functional grade</b>	A7R34, rat IgG2a	Unconjugated antibody for <i>in vitro</i> and <i>in vivo</i> blocking of IL-7 binding to its receptor	pure	1 mg in 0.5 mL		<b>130-094-828</b>
<b>CD140a</b>	APA5, rat IgG2a	Detection of CD140a <sup>+</sup> mouse cells	PE	100 tests	<b>NEW</b>	<b>130-096-271</b>
			APC	100 tests	<b>NEW</b>	<b>130-096-274</b>
			Biotin	100 tests	<b>NEW</b>	<b>130-096-273</b>
<b>CD140b</b>	APB5, rat IgG2a	Detection of CD140b <sup>+</sup> mouse cells	PE	100 tests	<b>NEW</b>	<b>130-096-267</b>
			APC	100 tests	<b>NEW</b>	<b>130-096-270</b>
			Biotin	100 tests	<b>NEW</b>	<b>130-096-272</b>

# MACS® Products for flow cytometry

Product	Clone Isotype	Brief description	Conjugate	Capacity <sup>1</sup> / content	Order no.
<b>Antibodies · Mouse (continued)</b>					
<b>CD146 (LSEC)</b>	ME-9F1, rat IgG2a	Detection of mouse liver sinusoidal endothelial cells	FITC	100 tests	<b>130-092-026</b>
			Biotin	100 tests	<b>130-092-025</b>
<b>CD154</b>	MR1, hamster IgG3	Detection of activated mouse T helper cells	PE	100 tests	<b>130-092-106</b>
			APC	100 tests	<b>130-092-105</b>
			Biotin	100 tests	<b>130-092-104</b>
<b>CD205 (DEC205)</b>	NLDC145, rat IgG2a	Detection of mouse CD8 <sup>+</sup> conventional DCs	PE	100 tests	<b>130-092-286</b>
			APC	100 tests	<b>130-092-285</b>
			Biotin	100 tests	<b>130-092-468</b>
<b>CD268</b>	7H22-E16, rat IgG1	Detection of mouse CD268 <sup>+</sup> cells	FITC	100 tests	<b>NEW</b> <b>130-096-350</b>
			PE	100 tests	<b>NEW</b> <b>130-096-268</b>
			APC	100 tests	<b>NEW</b> <b>130-096-262</b>
<b>CD278</b>	7E.17G9, rat IgG2b	Detection of mouse CD278 <sup>+</sup> cells	PE	100 tests	<b>NEW</b> <b>130-096-240</b>
			APC	100 tests	<b>NEW</b> <b>130-096-239</b>
			Biotin	100 tests	<b>NEW</b> <b>130-096-247</b>
<b>CD279 (PD-1)</b>	HA2-7B1, rat IgG2b	Detection of PD-1 <sup>+</sup> mouse cells	PE	100 tests	<b>130-094-783</b>
			APC	100 tests	<b>130-094-782</b>
			Biotin	100 tests	<b>130-094-779</b>
<b>CD279 (PD-1) – functional grade</b>	HA2-7B1, rat IgG2b	Functional grade antibody for blocking of binding of PD-1 to its ligands	pure	500 µg in 1 mL	<b>130-094-944</b>

## Kits for cell detection and enumeration · Mouse

<b>CD154 Detection Cocktail</b>	Identification of activated, antigen-specific mouse CD4 <sup>+</sup> T cells	PE	100 tests <sup>4</sup>	<b>130-093-084</b>
		APC	100 tests <sup>4</sup>	<b>130-093-083</b>
<b>Lineage Cell Detection Cocktail</b>	Labeling of lineage <sup>+</sup> cells from mouse bone marrow	Biotin	100 tests <sup>4</sup>	<b>130-092-613</b>
<b>Treg Detection Kit</b>	Kit for flow cytometric detection of mouse CD4 <sup>+</sup> CD25 <sup>+</sup> FoxP3 <sup>+</sup> cells	PE	50 tests <sup>4</sup>	<b>130-094-165</b>
		APC	100 tests <sup>4</sup>	<b>130-094-164</b>

## MACS Control Cocktails · Mouse

<b>MC CD4 T Cell Cocktail</b>	Evaluation of MACS Cell Separations using the CD4 <sup>+</sup> T Cell Isolation Kit, mouse, or CD4 (L3T4) MicroBeads, mouse	50 tests	<b>130-092-916</b>
<b>MC CD8a T Cell Cocktail</b>	Evaluation of MACS Cell Separations using the CD8a <sup>+</sup> T Cell Isolation Kit, mouse, or CD8a (Ly-2) MicroBeads, mouse	50 tests	<b>130-092-915</b>
<b>MC CD19 B Cell Cocktail</b>	Evaluation of MACS Cell Separations using the B Cell Isolation Kit, mouse, or CD19 MicroBeads, mouse	50 tests	<b>130-092-864</b>
<b>MC CD90.2 T Cell Cocktail</b>	Evaluation of MACS Cell Separations using the Pan T Cell Isolation Kit, mouse, or CD90.2 MicroBeads, mouse	50 tests	<b>130-092-862</b>

# MACS® Products for flow cytometry

Product	Clone Isotype	Brief description	Conjugate	Capacity <sup>1/</sup> content	Order no.
<b>IFN-γ Secretion Assay</b>		Detection Kit	PE	100 tests <sup>4</sup>	<b>130-090-516</b>
			APC	100 tests <sup>4</sup>	<b>130-090-984</b>
<b>IL-2 Secretion Assay</b>		Detection Kit	PE	100 tests <sup>4</sup>	<b>130-090-491</b>
			APC	100 tests <sup>4</sup>	<b>130-090-987</b>
<b>IL-4 Secretion Assay</b>		Detection Kit	PE	100 tests <sup>4</sup>	<b>130-090-479</b>
<b>IL-5 Secretion Assay</b>		Detection Kit	PE	100 tests <sup>4</sup>	<b>130-091-166</b>
			APC	100 tests <sup>4</sup>	<b>130-091-174</b>
<b>IL-10 Secretion Assay</b>		Detection Kit	PE	100 tests <sup>4</sup>	<b>130-090-489</b>
			APC	100 tests <sup>4</sup>	<b>130-090-939</b>
<b>IL-17 Secretion Assay</b>		Detection Kit	PE	100 tests <sup>4</sup>	<b>130-094-205</b>
			APC	100 tests <sup>4</sup>	<b>130-094-207</b>
<b>Anti-IFN-γ</b>	AN18.17.24, rat IgG	Intracellular staining of IFN-γ- producing cells	PE	100 tests	<b>130-092-346</b>
			APC	100 tests	<b>130-092-347</b>
<b>Anti-IFN-γ – functional grade</b>	AN18.17.24, rat IgG1	Functional grade antibody, e.g., for neutralization of IFN-γ activity	pure	500 µg in 0.5 mL	<b>NEW</b> <b>130-095-729</b>
<b>Anti-IL-2</b>	JES6-5H4, rat IgG2b	Intracellular staining of IL-2- producing cells	PE	100 tests	<b>130-092-302</b>
			APC	100 tests	<b>130-092-303</b>
<b>Anti-IL-2 – functional grade</b>	JES6-5H4, rat IgG2b	Functional grade antibody, e.g., for neutralization of IL-2 activity	pure	500 µg in 0.5 mL	<b>NEW</b> <b>130-095-736</b>
<b>Anti-IL-3</b>	MP2-8F8, rat IgG1	Intracellular staining of IL-3- producing mouse cells	PE	100 tests	<b>NEW</b> <b>130-096-181</b>
			APC	100 tests	<b>NEW</b> <b>130-096-184</b>
<b>Anti-IL-4</b>	BVD4-1D11, rat IgG2b	Intracellular staining of IL-4- producing mouse cells	PE	100 tests	<b>130-095-715</b>
			APC	100 tests	<b>130-095-711</b>
<b>Anti-IL-4 – functional grade</b>	BVD4-1D11, rat IgG2b	Functional grade antibody, e.g., for neutralization of IL-4 activity	pure	500 µg in 0.5 mL	<b>130-095-709</b>
<b>Anti-IL-5</b>	TRFK-5, rat IgG1	Intracellular staining of IL-5- producing mouse cells	PE	100 tests	<b>130-095-710</b>
			APC	100 tests	<b>130-095-705</b>
<b>Anti-IL-5 – functional grade</b>	TRFK-5, rat IgG1	Functional grade antibody, e.g., for neutralization of IL-5 activity	pure	500 µg in 0.5 mL	<b>130-095-712</b>
<b>Anti-IL-6</b>	MP5-20F3, rat IgG1	Intracellular staining of IL-6- producing mouse cells	PE	100 tests	<b>Coming soon</b> <b>130-096-139</b>
			APC	100 tests	<b>Coming soon</b> <b>130-096-131</b>
<b>Anti-IL-6 – functional grade</b>	MP5-20F3, rat IgG1	Functional grade antibody, e.g., for neutralization of IL-6 activity	pure	500 µg in 0.5 mL	<b>Coming soon</b> <b>130-096-130</b>
<b>Anti-IL-10</b>	JES5-16E3, rat IgG2b	Intracellular staining of IL-10- producing mouse cells	PE	100 tests	<b>130-095-840</b>
			APC	100 tests	<b>130-095-843</b>
<b>Anti-IL-10 – functional grade</b>	JES5-16E3, rat IgG2b	Functional grade antibody, e.g., for neutralization of IL-10 activity	pure	500 µg in 0.5 mL	<b>130-095-845</b>
<b>Anti-IL-17A</b>	TC11-18H10, rat IgG1	Intracellular staining of IL-17A- producing cells	FITC	100 tests	<b>130-094-298</b>
			PE	100 tests	<b>130-094-296</b>
			APC	100 tests	<b>130-094-294</b>
<b>Anti-IL-17A – functional grade</b>	TC11-18H10, rat IgG1	Functional grade antibody, e.g., for neutralization of IL-17A activity	pure	500 µg in 0.5 mL	<b>NEW</b> <b>130-095-732</b>

# MACS® Products for flow cytometry

Product	Clone Isotype	Brief description	Conjugate	Capacity <sup>1</sup> / content	Order no.
<b>Products for cytokine detection · Mouse (continued)</b>					
<b>Anti-TNF-α</b>	MP6-XT22, rat IgG1	Intracellular staining of TNF-α- producing cells	FITC	100 tests	<b>130-092-244</b>
			PE	100 tests	<b>130-092-245</b>
			APC	100 tests	<b>130-092-246</b>
<b>Anti-TNF-α – functional grade</b>	MP6-XT22, rat IgG1	Functional grade antibody, e.g., for neutralization of Anti-TNF-α activity	pure	500 µg in 0.5 mL	<b>NEW</b> <b>130-095-725</b>

## Antibodies · Rat

<b>Anti-A2B5</b>	105-HB29, mouse IgM	Detection of A2B5 <sup>+</sup> glial-restricted precursor cells in human, mouse, or rat	PE	100 tests <sup>4</sup>	<b>130-093-581</b>
			APC	100 tests <sup>4</sup>	<b>130-093-582</b>
			Biotin	100 tests <sup>4</sup>	<b>130-093-393</b>
			pure	100 µg in 1 mL	<b>130-093-394</b>
<b>Anti-PSA-NCAM</b>	2-2B, mouse IgM	Detection of PSA-NCAM <sup>+</sup> neuronal-restricted precursor human, mouse, and rat cells	PE	100 tests <sup>4</sup>	<b>130-093-274</b>
			APC	100 tests <sup>4</sup>	<b>130-093-273</b>
<b>CD90.1</b>	His51, mouse IgG2a	Detection of mouse and rat CD90.1 <sup>+</sup> cells	FITC	100 tests	<b>130-094-527</b>
			PE	100 tests	<b>130-094-528</b>
			APC	100 tests	<b>130-094-525</b>
			Biotin	100 tests	<b>130-094-526</b>
			VioBlue	100 tests	<b>130-094-588</b>
			pure	100 µg in 1 mL	<b>130-094-524</b>

## Indirect staining/other

<b>MACS Annexin V-FITC Kit</b>		Detection of apoptotic, necrotic, and dead cells	FITC	up to 100 tests <sup>4</sup>	<b>130-092-052</b>
<b>Annexin-V</b>		Detection of Annexin-V positive cells, e.g., apoptotic, necrotic, and dead cells	FITC	100 tests <sup>4</sup>	<b>130-093-060</b>
			Biotin	100 tests <sup>4</sup>	<b>130-092-773</b>
<b>Annexin-V Binding Buffer (20x)</b>		Stock solution		25 mL	<b>130-092-820</b>
<b>Propidium Iodide Solution</b>		Dead cell detection		2 mL	<b>130-093-233</b>
<b>Fixation and Dead Cell Discrimination Kit</b>		Flow cytometric dead cell exclusion in combination with cell fixation		100 tests	<b>130-091-163</b>
<b>One-Step Antibody Biotinylation Kit</b>		Small-scale biotinylation of antibodies for subsequent cell separation or flow cytometry		8 reactions	<b>130-093-385</b>
<b>Anti-Biotin</b>	Bio3-18E7, mouse IgG1	Fluorescent staining of cells labeled with biotinylated primary antibodies	FITC	100 tests	<b>130-090-857</b>
			PE	100 tests	<b>130-090-756</b>
			APC	100 tests	<b>130-090-856</b>
			VioBlue	100 tests	<b>130-094-669</b>
			PerCP	100 tests	<b>130-094-974</b>
<b>Anti-Biotin</b>	Bio3-18E7, mouse IgG1	Immunohistochemical detection of biotinylated primary antibodies	Alkaline Phosphatase	1 mL	<b>130-092-612</b>

# MACS® Products for flow cytometry

Product	Clone Isotype	Brief description	Conjugate	Capacity <sup>1/</sup> content	Order no.
<b>Indirect staining/other (continued)</b>					
<b>Anti-IgG1</b>	X-56, rat IgG1	Staining of cells labelled with a primary mouse antibody of IgG1 isotype. Detection of cells expressing surface IgG1	FITC	100 tests	<b>130-095-897</b>
			PE	100 tests	<b>130-095-900</b>
			APC	100 tests	<b>130-095-902</b>
			Biotin	100 tests	<b>130-095-879</b>
<b>Anti-IgG2ab</b>	X-57, rat IgG1	Staining of cells labelled with a primary mouse antibody of IgG2a and b isotype. Detection of cells expressing surface IgG2a and b	FITC	100 tests	<b>130-095-875</b>
			PE	100 tests	<b>130-095-877</b>
			APC	100 tests	<b>130-095-880</b>
			Biotin	100 tests	<b>130-095-881</b>
<b>Anti-IgM</b>	X-54, rat IgG2a	Staining of cells labeled with a primary antibody of mouse IgM isotype. Detection of IgM <sup>+</sup> mouse B cells	FITC	100 tests	<b>130-095-906</b>
			PE	100 tests	<b>130-095-908</b>
			APC	100 tests	<b>130-095-910</b>
			Biotin	100 tests	<b>130-095-904</b>
<b>FASER Kits</b>		Fluorescence amplification	FITC	100 tests	<b>130-091-763</b>
			PE	100 tests	<b>130-091-764</b>
			APC	100 tests	<b>130-091-762</b>
<b>FoxP3 Staining Buffer Set</b>		Optimized buffers for intracellular staining of cells with Anti-FoxP3 antibodies		100 tests	<b>130-093-142</b>
<b>Inside Stain Kit</b>		Fixation and permeabilization of cells for intracellular staining with small staining volumes and minimal cell loss		up to 50 tests	<b>130-090-477</b>
<b>FcR Blocking Reagent, human</b>		Blocking of Fc receptor-mediated binding to human/non-human primate cells		2 mL	<b>130-059-901</b>
<b>FcR Blocking Reagent, mouse</b>		Blocking of Fc receptor-mediated binding to mouse cells		1 mL	<b>130-092-575</b>
<b>Labeling Check Reagent</b>	AC146, mouse IgG3	Staining of cells separated by MACS Technology	FITC	100 tests	<b>NEW</b> <b>130-095-226</b>
			PE	100 tests	<b>NEW</b> <b>130-095-228</b>
			APC	100 tests	<b>NEW</b> <b>130-095-237</b>
			VioBlue	100 tests	<b>NEW</b> <b>130-095-087</b>
<b>MACS Comp Reagent, human</b>		Routine compensation of flow cytometers	PE	100 tests	<b>130-092-671</b>
			APC	100 tests	<b>130-092-669</b>
<b>MACS Comp Reagent, mouse</b>		Routine compensation of flow cytometers	PE	100 tests	<b>130-092-670</b>
			APC	100 tests	<b>130-092-668</b>
<b>MACS Comp Mouse Igκ Reagent</b>		Routine compensation of flow cytometers, suited for any given fluorochrome conjugated to mouse antibodies with kappa light chains		100 tests <sup>4</sup>	<b>130-094-548</b>
<b>MACSQuant Calibration Beads</b>		Routine calibration of the MACSQuant Analyzer		5 mL	<b>130-093-607</b>
<b>Red Blood Cell Lysis Solution (10x)</b>		Lysis of human or rodent erythrocytes		50 mL	<b>130-094-183</b>

# MACS® Products for flow cytometry

Product	Clone Isotype	Brief description	Conjugate	Capacity <sup>1</sup> / content	Order no.
<b>Isolation and analysis of epitope-tagged proteins</b>					
<b>Anti-c-myc</b>		Detection of c-myc tagged proteins by immunofluorescence analysis	FITC	1 mL	<b>130-092-472</b>
			Biotin	1 mL	<b>130-092-471</b>
		Western blotting	HRP	100 µL	<b>130-092-113</b>
<b>Anti-HA</b>		Detection of HA-tagged proteins by immunofluorescence analysis	FITC	100 tests <sup>4</sup>	<b>130-092-256</b>
			PE	100 tests <sup>4</sup>	<b>130-092-257</b>
			Biotin	100 tests <sup>4</sup>	<b>130-092-258</b>
		Western blotting	HRP	100 µL	<b>130-091-972</b>
<b>Anti-His</b>		Detection of HA-tagged proteins by immunofluorescence analysis	FITC	1 mL	<b>130-092-675</b>
			PE	1 mL	<b>130-092-691</b>
			Biotin	1 mL	<b>130-092-692</b>
		Western blotting	HRP	100 µL	<b>130-092-785</b>
<b>Anti-GFP</b>		Western blotting	HRP	100 µL	<b>130-091-833</b>

## REMARKS

<sup>1</sup> One test corresponds to labeling of up to 10<sup>7</sup> cells in a total volume of 100 µL.

<sup>2</sup> One test corresponds to labeling of 2 × 300 µL whole blood or 2 × 10<sup>6</sup> PBMCs.

<sup>3</sup> One test corresponds to labeling of 2 × 100 µL whole blood or 2 × 10<sup>6</sup> PBMCs.

<sup>4</sup> One test corresponds to the analysis of 1 × 10<sup>6</sup> total cells.

<sup>5</sup> One test corresponds to the analysis of 5 × 10<sup>7</sup> total cells.

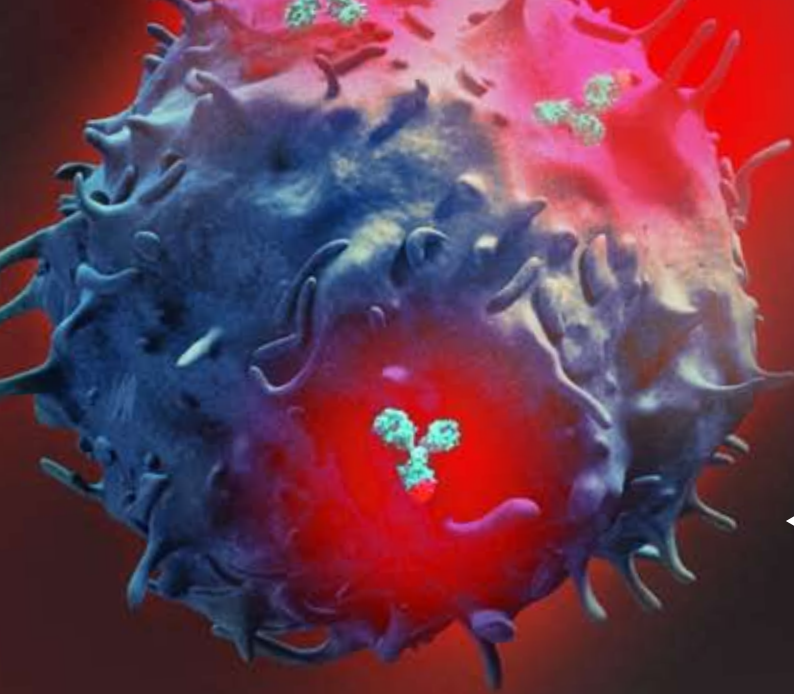
<sup>6</sup> One test corresponds to 20.5 mL whole blood, cord blood, or bone marrow or to 2 × 10<sup>8</sup> white blood cells for leukapheresis product.

<sup>7</sup> Not recommended for cells that are labeled with MACS MicroBeads using the same antigen.

All products must be stored at 2–8 °C unless otherwise stated.







◀ Leukocyte labeled by a  
fluorochrome-conjugated  
antibody analyzed by  
flow cytometry using  
the MACSQuant® Analyzer.

[www.macsquant.com](http://www.macsquant.com)



Miltenyi Biotec

**Germany/Austria/  
Switzerland**

Miltenyi Biotec GmbH  
Friedrich-Ebert-Straße 68  
51429 Bergisch Gladbach  
Germany

General information:  
Phone +49 2204 8306-0  
Fax +49 2204 85197  
[macs@miltenyibiotec.de](mailto:macs@miltenyibiotec.de)

Orders:  
Phone +49 2204 8306-20  
Fax +49 2204 8306-235  
[macsorders@miltenyibiotec.de](mailto:macsorders@miltenyibiotec.de)

**USA/Canada**

Miltenyi Biotec Inc.  
2303 Lindbergh Street  
Auburn, CA 95602, USA  
Phone 800 FOR MACS  
Phone +1 530 888 8871  
Fax +1 530 888 8925  
[macs@miltenyibiotec.com](mailto:macs@miltenyibiotec.com)

[www.miltenyibiotec.com](http://www.miltenyibiotec.com)

Miltenyi Biotec provides products and services worldwide. Visit [www.miltenyibiotec.com/local](http://www.miltenyibiotec.com/local) to find your nearest Miltenyi Biotec contact.

**Australia**

Miltenyi Biotec  
Australia Pty. Ltd.  
Unit 16A, 2 Eden Park Drive  
North Ryde, NSW 2113  
Australia  
Phone +61 2 8877 7400  
Fax +61 2 9889 5044  
[macs@miltenyibiotec.com.au](mailto:macs@miltenyibiotec.com.au)

**Benelux**

Miltenyi Biotec B.V.  
Schipholweg 68 H, 2316 Leiden  
The Netherlands  
[macs@miltenyibiotec.nl](mailto:macs@miltenyibiotec.nl)

**Customer service Netherlands**

Phone 0800 4020120  
Fax 0800 4020100

**Customer service Belgium**

Phone 0800 94016  
Fax 0800 99626

**Customer service Luxembourg**

Phone 800 24971  
Fax 800 24984

**China**

Miltenyi Biotec GmbH  
Shanghai Office  
Rm. 2309-2310,  
No. 319 Xianxia Rd.  
Shanghai 200051, P.R. China  
Phone +86 21 62351005  
Fax +86 21 62350953  
[macs@miltenyibiotec.com.cn](mailto:macs@miltenyibiotec.com.cn)

**France**

Miltenyi Biotec SAS  
10 rue Mercœur  
75011 Paris, France  
Phone +33 1 56 98 16 16  
Fax +33 1 56 98 16 17  
[macs@miltenyibiotec.fr](mailto:macs@miltenyibiotec.fr)

**Italy**

Miltenyi Biotec S.r.l.  
Via Persicetana, 2/D  
40012 Calderara di Reno (BO)  
Italy  
Phone +39 051 6 460 411  
Fax +39 051 6 460 499  
[macs@miltenyibiotec.it](mailto:macs@miltenyibiotec.it)

**Japan**

Miltenyi Biotec K.K.  
Nittsu-Eitai Building 5F  
16-10 Fuyuki, Koto-ku,  
Tokyo 135-0041, Japan  
Phone +81 3 5646 8910  
Fax +81 3 5646 8911  
[macs@miltenyibiotec.jp](mailto:macs@miltenyibiotec.jp)

**Singapore**

Miltenyi Biotec  
Asia Pacific Pte Ltd.  
100 Beach Road  
#28-06 to 28-08 Shaw Tower  
Singapore 189702  
Phone +65 6238 8183  
Fax +65 6238 0302  
[macs@miltenyibiotec.com.sg](mailto:macs@miltenyibiotec.com.sg)

**Spain**

Miltenyi Biotec S.L.  
C/Luis Buñuel 2  
Ciudad de la Imagen  
28223 Pozuelo de Alarcón  
(Madrid), Spain  
Phone +34 91 512 12 90  
Fax +34 91 512 12 91  
[macs@miltenyibiotec.es](mailto:macs@miltenyibiotec.es)

**United Kingdom**

Miltenyi Biotec Ltd.  
Almac House, Church Lane  
Bisley, Surrey GU24 9DR  
UK  
Phone +44 1483 799 800  
Fax +44 1483 799 811  
[macs@miltenyibiotec.co.uk](mailto:macs@miltenyibiotec.co.uk)