



CD61 MicroBeads

human

Order no. 130-051-101

Index

1. Description
 - 1.1 Principle of MACS® Separation
 - 1.2 Background and product applications
 - 1.3 Reagent and instrument requirements
2. Protocol
 - 2.1 Sample preparation
 - 2.2 Magnetic labeling
 - 2.3 Magnetic separation
3. Example of a separation using CD61 MicroBeads
4. References
5. Special cell separation protocol: Megakaryocyte isolation

1. Description

Components	2 mL CD61 MicroBeads, human: MicroBeads conjugated to monoclonal mouse anti-human CD61 antibodies (isotype: mouse IgG1).
Size	For 10 ⁹ total cells, up to 100 separations.
Product format	CD61 MicroBeads are supplied as a suspension containing stabilizer and 0.05% sodium azide.
Storage	Store protected from light at 2–8 °C. Do not freeze. The expiration date is indicated on the vial label.

1.1 Principle of MACS® Separation

First, the CD61⁺ cells are magnetically labeled with CD61 MicroBeads. Then, the cell suspension is loaded onto a MACS® Column which is placed in the magnetic field of a MACS Separator. The magnetically labeled CD61⁺ cells are retained on the column. The unlabeled cells run through and this cell fraction is depleted of CD61⁺ cells. After removal of the column from the magnetic field, the magnetically retained CD61⁺ cells can be eluted as the positively selected cell fraction.

1.2 Background and product applications

CD61 MicroBeads can be used for the isolation or depletion of megakaryocytes and their precursors from bone marrow^{1,3} and for the removal of platelets from peripheral blood cell preparations. The CD61 antigen is also known as the integrin β3-subunit. CD61 combines with CD41 to form the heterodimeric gpIIb/gpIIIa complex, which is present on human megakaryocytes and platelets, mediating cell adhesion processes. Together with CD51, CD61 forms the vitronectin receptor, which is present on platelets as well as on a variety of other cell types like osteoclasts and endothelial vessel cells. CD61 MicroBeads were reported to cross-react with canine platelets.

Examples of applications

- CD61⁺ cells from bone marrow cells are isolated for studies on megakaryocytopoiesis.
- Positive selection or depletion of cells expressing human CD61 antigen.
- Isolation of megakaryocytes from human bone marrow (see: 5. Special cell separation protocol: Megakaryocytes isolation).¹
- Depletion or isolation of platelets from human peripheral blood.
- Isolation or depletion of leukocyte-platelet conjugates from human peripheral blood.

1.3 Reagent and instrument requirements

- Buffer: Prepare a solution containing phosphate-buffered saline (PBS) pH 7.2, 0.5% BSA and 2 mM EDTA by diluting MACS BSA Stock Solution (# 130-091-376) 1:20 in autoMACS™ Rinsing Solution (# 130-091-222). Keep buffer cold (4–8 °C). Degas buffer before use, as air bubbles could block the column.

▲ **Note:** EDTA can be replaced by other supplements such as anticoagulant citrate dextrose formula-A (ACD-A) or citrate phosphate dextrose (CPD). BSA can be replaced by other proteins such as human serum albumin, human serum or fetal calf serum. Buffers or media containing Ca²⁺ or Mg²⁺ are not recommended for use.

- MACS Columns and MACS Separators: CD61⁺ cells can be enriched from bone marrow, peripheral blood or cultivated cells by using MS, LS or XS Columns (positive selection). CD61 MicroBeads can be used for depletion of CD61⁺ cells on LD, CS or D Columns. Cells which strongly express the CD61 antigen can also be depleted using MS, LS, or XS Columns. Positive selection or depletion can also be performed by using the autoMACS Separator.

Column	Max. number of labeled cells	Max. number of total cells	Separator
Positive selection			
MS	10 ⁷	2×10 ⁸	MiniMACS, OctoMACS, VarioMACS, SuperMACS
LS	10 ⁸	2×10 ⁹	MidiMACS, QuadroMACS, VarioMACS, SuperMACS
XS	10 ⁹	2×10 ¹⁰	SuperMACS
Depletion			
LD	10 ⁸	5×10 ⁸	MidiMACS, QuadroMACS, VarioMACS, SuperMACS
CS	2×10 ⁸		VarioMACS, SuperMACS
D	10 ⁹		SuperMACS
Positive selection or depletion			
autoMACS	2×10 ⁸	4×10 ⁹	autoMACS

▲ **Note:** Column adapters are required to insert certain columns into the VarioMACS™ or SuperMACS™ Separators. For details see the respective MACS Separator data sheet.

140 000 091 06



- (Optional) Fluorochrome-conjugated CD61 antibody for flow-cytometric analysis, e.g., CD61-PE (# 130-081-501), CD45-FITC (# 130-080-202), CD45-PE (# 130-080-201), CD45-APC (# 130-091-230).
- (Optional) Propidium iodide (PI) or 7-AAD for flow-cytometric exclusion of dead cells.
- (Optional) Pre-Separation Filters (# 130-041-407) to remove cell clumps.

2. Protocol

2.1 Sample preparation

When working with anticoagulated peripheral blood or buffy coat, peripheral blood mononuclear cells (PBMCs) should be isolated by density gradient centrifugation, e.g. using Ficoll-Paque™. For details see section General Protocols in the User Manuals or visit www.miltenyibiotec.com/protocols.

When working with tissues, prepare a single-cell suspension by a standard preparation method.

For details see section General Protocols in the User Manuals or visit www.miltenyibiotec.com/protocols.

▲ **Note:** Dead cells may bind non-specifically to MACS MicroBeads. To remove dead cells, we recommend using density gradient centrifugation or the Dead Cell Removal Kit (# 130-090-101).



2.2 Magnetic labeling

▲ Work fast, keep cells cold, and use pre-cooled solutions. This will prevent capping of antibodies on the cell surface and non-specific cell labeling.

▲ Volumes for magnetic labeling given below are for up to 10^7 total cells. When working with fewer than 10^7 cells, use the same volumes as indicated. When working with higher cell numbers, scale up all reagent volumes and total volumes accordingly (e.g. for 2×10^7 total cells, use twice the volume of all indicated reagent volumes and total volumes).

▲ For optimal performance it is important to obtain a single-cell suspension before magnetic separation. Pass cells through 30 μ m nylon mesh (Pre-Separation Filters, # 130-041-407) to remove cell clumps which may clog the column.

1. Determine cell number.
2. Centrifuge cell suspension at 300 \times g for 10 minutes. Aspirate supernatant completely.
3. Resuspend cell pellet in 80 μ L of buffer per 10^7 total cells.
4. Add 20 μ L of CD61 MicroBeads per 10^7 total cells.
5. Mix well and incubate for 15 minutes at 4–8 °C.
6. (Optional) Add staining antibodies, e.g., add 10 μ L of CD61-PE (# 130-081-501), and incubate for 5 minutes at 4–8 °C.
7. Wash cells by adding 1–2 mL of buffer per 10^7 cells and centrifuge at 300 \times g for 10 minutes. Aspirate supernatant completely.
8. Resuspend up to 10^8 cells in 500 μ L of buffer.

▲ **Note:** Working on ice may require increased incubation times. Higher temperatures and/or longer incubation times may lead to non-specific cell labeling.

▲ **Note:** For depletion with LD Columns, resuspend up to 1.25×10^8 cells in 500 μ L of buffer.

9. Proceed to magnetic separation (2.3).



2.3 Magnetic separation

▲ Choose an appropriate MACS Column and MACS Separator according to the number of total cells and the number of CD61⁺ cells. For details see table in section 1.3.

Magnetic separation with MS or LS Columns

1. Place column in the magnetic field of a suitable MACS Separator. For details see respective MACS Column data sheet.
2. Prepare column by rinsing with appropriate amount of buffer:
MS: 500 μ L LS: 3 mL
3. Apply cell suspension onto the column.
4. Collect unlabeled cells that pass through and wash column with appropriate amount of buffer. Perform washing steps by adding buffer three times. Only add new buffer when the column reservoir is empty.
MS: 3 \times 500 μ L LS: 3 \times 3 mL
Collect total effluent; this is the unlabeled cell fraction.
5. Remove column from the separator and place it on a suitable collection tube.
6. Pipette an appropriate amount of buffer onto the column. Immediately flush out the magnetically labeled cells by firmly pushing the plunger into the column.
MS: 1 mL LS: 5 mL

▲ **Note:** To increase the purity of the magnetically labeled fraction, it can be passed over a new, freshly prepared column.

Magnetic separation with XS Columns

For instructions on the column assembly and the separation, refer to the XS Column data sheet.

Depletion with LD Columns

1. Place LD Column in the magnetic field of a suitable MACS Separator. For details see LD Column data sheet.
2. Prepare column by rinsing with 2 mL of buffer.
3. Apply cell suspension onto the column.
4. Collect unlabeled cells which pass through and wash column with 2 \times 1 mL of buffer. Collect total effluent. This is the unlabeled cell fraction.

Depletion with CS Columns

1. Assemble CS Column and place it in the magnetic field of a suitable MACS Separator. For details see CS Column data sheet.
2. Prepare column by filling and rinsing with 60 mL of buffer. Attach a 22G flow resistor to the 3-way-stopcock of the assembled column. For details see CS Column data sheet.
3. Apply cell suspension onto the column.
4. Collect unlabeled cells which pass through and wash column with 30 mL buffer from the top. Collect total effluent. This is the unlabeled cell fraction.

Depletion with D Columns

For instructions on column assembly and separation, refer to the D Column data sheet.

Magnetic separation with the autoMACS™ Separator

▲ Refer to the autoMACS™ User Manual for instructions on how to use the autoMACS Separator.

1. Prepare and prime autoMACS Separator.
2. Place tube containing the magnetically labeled cells in the autoMACS Separator. For a standard separation, choose one of the following separation programs:

Positive selection: "Possel"

Depletion: "Depletes"

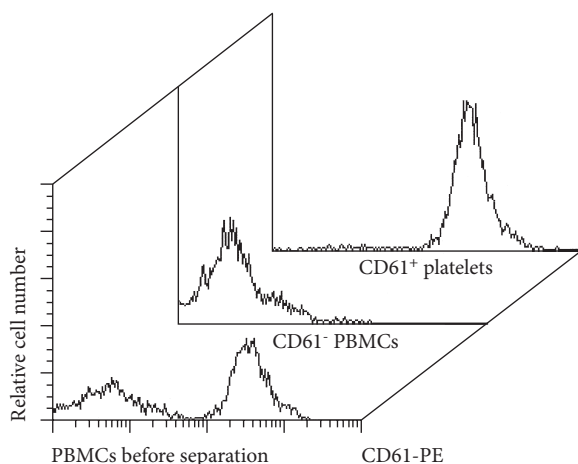
▲ **Note:** Program choice depends on the isolation strategy, the strength of magnetic labeling and the frequency of magnetically labeled cells. For details see autoMACS User Manual: "autoMACS Cell Separation Programs".

3. When using the program "Possel", collect positive fraction outlet port pos1. This is the purified CD61⁺ cell fraction.

When using the program "Depletes", collect unlabeled fraction from outlet port "neg1". This is the CD61⁻ cell fraction.

3. Example of a separation using CD61 MicroBeads

Separation of PBMCs using CD61 MicroBeads and a MiniMACS™ Separator with an MS Column. The cells are fluorescently stained with CD61-PE (# 130-081-501). Cell debris and dead cells were excluded from the analysis based on scatter signals and PI fluorescence.



4. References

1. Schmitz, B. *et al.* (1994) *Eur. J. Hematol.* 52: 267-275. [104]
2. Komor, M. *et al.* (2005) *Stem cells* 23: 1154-1169.
3. Appel, S. *et al.* (2006) *Blood* 107: 3265-3270.

Warnings

Reagents contain sodium azide. Under acidic conditions sodium azide yields hydrazoic acid, which is extremely toxic. Azide compounds should be diluted with running water before discarding. These precautions are recommended to avoid deposits in plumbing where explosive conditions may develop.

Warranty

The products sold hereunder are warranted only to be free from defects in workmanship and material at the time of delivery to the customer. Miltenyi Biotec GmbH makes no warranty or representation, either expressed or implied, with respect to the fitness of a product for a particular purpose. There are no warranties, expressed or implied, which extend beyond the technical specifications of the products. Miltenyi Biotec GmbH's liability is limited to either replacement of the products or refund of the purchase price. Miltenyi Biotec GmbH is not liable for any property damage, personal injury or economic loss caused by the product.

MACS is a registered trademark of Miltenyi Biotec GmbH.

autoMACS, MidiMACS, MiniMACS, OctoMACS, QuadroMACS, SuperMACS, and VarioMACS are trademarks of Miltenyi Biotec GmbH.

Ficoll-Paque and Percoll are trademarks of GE Healthcare companies.

© 2006 Miltenyi Biotec GmbH. Printed in Germany.

5. Special cell separation protocol: Megakaryocyte isolation

Megakaryocytes can be isolated from bone marrow preparations using CD61 MicroBeads, which are developed for separation of human cells based on the expression of the CD61 antigen. CD61 is expressed on thrombocytes, megakaryocytes, osteoclasts and endothelial vessel cells. For MACS separation, megakaryocytes are magnetically labeled using CD61 MicroBeads. The magnetically labeled cells are retained on a MACS[®] Column in the magnetic field of a MACS Separator.

Instrument and reagent requirements

- Buffer: Prepare a solution containing phosphate-buffered saline (PBS) pH 7.2, 0.5% BSA and 2 mM EDTA by diluting MACS BSA Stock Solution (# 130-091-376) 1:20 with autoMACS[™] Rinsing Solution (# 130-091-222). Keep buffer cold (4–8 °C). Degas buffer before use, as air bubbles could block the column.

▲ **Note:** EDTA can be replaced by other supplements such as anticoagulant citrate dextrose formula-A (ACD-A) or citrate phosphate dextrose (CPD). BSA can be replaced by other proteins such as human serum albumin, human serum or fetal calf serum. Buffers or media containing Ca²⁺ or Mg²⁺ are not recommended for use.

- CD61 MicroBeads (# 130-051-101).
- Large Cell Separation Columns (# 130-042-202).
- RPMI 1640 (# 130-091-440).
- RPMI/FCS/EDTA: RPMI 1640 containing 25% FCS and 2 mM EDTA.
- Percoll[™] (1.05 g/mL).
- (Optional) Fluorochrome-conjugated CD61 antibody for flow cytometric analysis, e.g., CD61-PE (# 130-081-501).

Isolation of megakaryocytes from bone marrow

▲ If cells cannot be separated on the day of harvest, store cells at 4 °C.

▲ Remove all cell clumps during the cell preparation.

1. Collect human spongiosa material (e.g. from ribs).
2. Take up spongiosa material in 5 mL of RPMI 1640 per approximately 0.5 cm³ of spongiosa material.
3. Incubate cells in 6 well plate at 37 °C, 5% CO₂ for 4 hours under agitation to detach the bone marrow cells from the bone.
4. Subsequently, incubate cells overnight in 25 cm² tissue flask at 37 °C, 5% CO₂ to eliminate stroma cells and fibroblasts. Collect the non-adherent cells.
5. Wash cells by adding RPMI/FCS/EDTA, centrifuge at 200×g for 10 minutes, remove supernatant completely. Repeat washing procedure once and resuspend cells in 7 mL RPMI/FCS/EDTA.
6. Carefully layer 7 mL of diluted cell suspension over 7 mL of Percoll (1.05 g/mL).
7. Centrifuge for 30 minutes at 400×g at 20 °C in a swinging-bucket rotor without break.
8. Aspirate the upper layer leaving the mononuclear cell layer undisturbed at the interphase.
9. Carefully collect interphase cells and wash them in PBS/BSA/EDTA. Centrifuge for 10 minutes at 200×g at 20 °C. Repeat this wash step.



Magnetic labeling of 1×10⁷ total cells in suspension

1. Resuspend 1×10⁷ cells with PBS/BSA/EDTA in a final volume of 80 µL.
2. Add 20 µL CD61 MicroBeads.
3. Mix well and incubate for 15 minutes at 4–8 °C.
3. (Optional) Add fluorochrome-conjugated CD61 antibody, e.g., CD61-PE (# 130-081-501), at the titer recommended by the manufacturer and incubate for an additional 5–10 minutes at 4–8 °C.
4. Wash cells by adding 1–2 mL of buffer per 10⁷ cells and centrifuge at 300×g for 10 minutes. Aspirate supernatant completely.
5. Resuspend up to 10⁸ cells in 500 µL of buffer.



Magnetic separation

1. Place Large Cell Separation Column (without flow resistor) in the MACS Separator.
2. Prepare column by rinsing with 500 µL of PBS/BSA/EDTA.
3. Apply cell suspension onto the column.
4. Collect unlabeled cells which pass through and wash column with 3×500 µL of PBS/BSA/EDTA. Perform washing steps by adding buffer three times, each time once the column reservoir is empty. Collect total effluent. This is the unlabeled cell fraction.
5. Remove column from the separator and place it on a suitable collection tube.
6. Pipette appropriate 1 mL of PBS/BSA/EDTA onto the column. Immediately flush out fraction with the magnetically labeled cells by firmly applying the plunger supplied with the column.
- ▲ **Note:** To increase the purity of the magnetically labeled fraction, it can be passed over a new, freshly prepared column.
7. Elute positive fraction as described above and proceed to analysis by flow cytometry or fluorescence microscopy.