



# CD16 MicroBeads non-human primate

Order No. 130-091-145

## Magnetic cell sorting

### Index

1. Description
  - 1.1 Principle of MACS<sup>®</sup> separation
  - 1.2 Background and product applications
  - 1.3 Reagent and instrument requirements
2. Protocol
  - 2.1 Sample preparation
  - 2.2 Magnetic labeling
  - 2.3 Magnetic separation
3. Examples of separations using CD16 MicroBeads
4. Reference

### 1. Description

<b>Components</b>	2 mL CD16 MicroBeads, non-human primate: MicroBeads conjugated to monoclonal anti-human CD16 antibodies (isotype: mouse IgM).
<b>Size</b>	For 10 <sup>9</sup> total cells, up to 100 separations.
<b>Product format</b>	MACS <sup>®</sup> MicroBeads are supplied as a suspension containing 0.1% stabilizer and 0.05% sodium azide.
<b>Storage</b>	Store protected from light at 4–8 °C. Do not freeze. The expiration date is indicated on the vial label.

**This product is applicable for the separation of cells from rhesus monkey (*Macaca mulatta*). The CD16 antibody has been tested to cross-react with cynomolgus monkey (*Macaca fascicularis*). Cross-reactivity with other non-human primates has not been tested.**

#### 1.1 Principle of MACS<sup>®</sup> separation

First the CD16<sup>+</sup> cells are magnetically labeled with CD16 MicroBeads. Then the cell suspension is loaded onto a MACS<sup>®</sup> Column which is placed in the magnetic field of a MACS Separator. The magnetically labeled CD16<sup>+</sup> cells are retained in the column. The unlabeled cells run through, this cell fraction is depleted of CD16<sup>+</sup> cells. After removal of the column from the magnetic field, the magnetically retained CD16<sup>+</sup> cells can be eluted as the positively selected cell fraction.

#### 1.2 Background and product applications

CD16 MicroBeads are developed for the separation of non-human primate cells based on the expression of the CD16 antigen. CD16 is expressed on rhesus monkey NK cells and a subset of monocytes.

#### Examples of applications

- Positive selection or depletion of cells expressing CD16 antigen.
- Isolation or depletion of CD16<sup>+</sup> cells from rhesus monkey peripheral blood mononuclear cells (PBMCs) or single-cell suspensions from lymphoid tissue.

- Isolation of CD16<sup>+</sup> NK cells from rhesus monkey PBMCs after depletion of monocytes with MACS CD56 MicroBeads (# 130-091-094) or MACS CD14 MicroBeads (# 130-091-097).  
▲ **Note:** Rhesus monkey monocytes but not NK cells are reported to express CD56.<sup>1</sup>
- Depletion of CD16<sup>+</sup> cells prior to positive selection of rhesus monkey cytotoxic T cells using CD8 MicroBead Kit (# 130-091-112).

#### 1.3 Reagent and instrument requirements

- Buffer (degassed): Prepare a solution containing PBS (phosphate buffered saline) pH 7.2, 0.5% BSA and 2 mM EDTA by diluting MACS BSA Stock Solution (# 130-091-376) 1:20 with autoMACS<sup>™</sup> Rinsing Solution (# 130-091-222). Keep buffer cold (4–8 °C).  
▲ **Note:** EDTA can be replaced by other supplements such as anticoagulant citrate dextrose formula-A (ACD-A) or citrate phosphate dextrose (CPD). BSA can be replaced by other proteins such as human serum albumin, human serum or fetal calf serum. Buffers or media containing Ca<sup>2+</sup> or Mg<sup>2+</sup> are not recommended for use.
- MACS Columns and MACS Separators: CD16<sup>+</sup> cells can be enriched by using MS, LS or XS Columns (positive selection). CD16 MicroBeads can be used for depletion of CD16<sup>+</sup> cells on LD, CS or D Columns. Positive selection or depletion can also be performed by using the autoMACS Separator.

Column	max. number of labeled cells	max. number of total cells	Separator
<b>Positive selection</b>			
MS	10 <sup>7</sup>	2×10 <sup>8</sup>	MiniMACS, OctoMACS, VarioMACS, SuperMACS
LS	10 <sup>8</sup>	2×10 <sup>9</sup>	MidiMACS, QuadroMACS, VarioMACS, SuperMACS
XS	10 <sup>9</sup>	2×10 <sup>10</sup>	SuperMACS
<b>Depletion</b>			
LD	10 <sup>8</sup>	5×10 <sup>8</sup>	MidiMACS, QuadroMACS, VarioMACS, SuperMACS
CS	2×10 <sup>8</sup>		VarioMACS, SuperMACS
D	10 <sup>9</sup>		SuperMACS
<b>Positive selection or depletion</b>			
autoMACS	2×10 <sup>8</sup>	4×10 <sup>9</sup>	autoMACS

- ▲ **Note:** Column adapters are required to insert certain columns into VarioMACS or SuperMACS. For details, see MACS Separator data sheets.
- (Optional) Fluorochrome-conjugated CD16 antibodies for flow-cytometric analysis, e.g. CD16-FITC (# 130-091-244), CD16-PE (# 130-091-245) or CD16-APC (# 130-091-246).
- (Optional) Pre-Separation Filters (# 130-041-407) to remove cell clumps.

140-006-000-091



- (Optional) PI (propidium iodide) or 7-AAD for the flow cytometric exclusion of dead cells.

## 2. Protocol

### 2.1 Sample preparation

When working with rhesus monkey anticoagulated peripheral blood or buffy coat, PBMCs can be isolated by density gradient centrifugation, e.g. Ficoll-Paque™, as with human samples (see "General Protocols" in the User Manuals or visit [www.miltenyibiotec.com/protocols](http://www.miltenyibiotec.com/protocols)).

▲ **Note:** Remove platelets after density gradient separation: resuspend cell pellet in buffer and centrifuge at 200×g for 10–15 minutes at 20 °C. Carefully remove supernatant. Repeat washing step and carefully remove supernatant.

When working with tissue, prepare a single-cell suspension by using a standard preparation method (see "General Protocols" in the User Manuals or visit [www.miltenyibiotec.com/protocols](http://www.miltenyibiotec.com/protocols)).

▲ **Note:** Dead cells may bind non-specifically to MACS MicroBeads. To remove dead cells, we recommend using density gradient centrifugation or using the Dead Cell Removal Kit (# 130-090-101).



### 2.2 Magnetic labeling

▲ Work fast, keep the cells cold, and use pre-cooled solutions. This will prevent capping of antibodies on the cell surface and a non-specific cell labeling.

▲ Volumes for magnetic labeling given below are for 10<sup>7</sup> total cells. When working with fewer than 10<sup>7</sup> cells, use the same volumes as indicated. When working with higher cell numbers, scale up all reagent volumes and total volumes, accordingly (e.g. for 2×10<sup>7</sup> total cells, use twice the volume of all indicated reagent volumes and total volumes).

▲ For optimal performance it is important to obtain a single-cell suspension before magnetic separation. Pass cells through 30 µm nylon mesh (Pre-Separation Filters # 130-041-407) to remove cell clumps which may clog the column.

1. Determine cell number.
2. Centrifuge at 300×g for 10 minutes. Pipette off supernatant completely.
3. Resuspend cell pellet in 80 µL of buffer per 10<sup>7</sup> total cells.
4. Add 20 µL of CD16 MicroBeads per 10<sup>7</sup> total cells.
5. Mix well and incubate for 15 minutes at 4–8 °C.
 

▲ **Note:** Working on ice requires increased incubation time. Higher temperatures and/or longer incubation times lead to non-specific cell labeling.
6. (Optional) Add staining antibodies, e.g. CD16-PE according to manufacturer's recommendation and incubate for 5 minutes at 4–8 °C.
7. Wash cells by adding 1–2 mL of buffer per 10<sup>7</sup> cells and centrifuge at 300×g for 10 minutes. Pipette off supernatant completely.
8. Resuspend up to 10<sup>8</sup> cells in 500 µL of buffer.
 

▲ **Note:** For higher cell numbers, scale up accordingly.

▲ **Note:** For depletion with LD Columns, resuspend up to 1.25×10<sup>8</sup> cells in 500 µL of buffer.
9. Proceed to magnetic separation (2.3).



### 2.3 Magnetic separation

▲ Choose an appropriate MACS Column and MACS Separator according to the number of total cells and the number of CD16<sup>+</sup> cells (see table 1.3).

#### Magnetic separation with MS or LS Columns

1. Place column in the magnetic field of a suitable MACS Separator (see "Column data sheets").
2. Prepare column by rinsing with appropriate amount of buffer:  
MS: 500 µL      LS: 3 mL.
3. Apply cell suspension onto the column.
4. Collect unlabeled cells which pass through and wash column with appropriate amount of buffer. Perform washing steps by adding buffer three times, each time once the column reservoir is empty.  
MS: 3×500 µL      LS: 3×3 mL.  
Collect total effluent. This is the unlabeled cell fraction.
5. Remove column from the separator and place it on a suitable collection tube.
6. Pipette appropriate amount of buffer onto the column. Immediately flush out fraction with the magnetically labeled cells by firmly applying the plunger, supplied with the column.  
MS: 1 mL      LS: 5 mL.

▲ **Note:** To increase the purity of the magnetically labeled fraction, it can be passed over a new, freshly prepared column.

#### Magnetic separation with XS Columns

For instructions on the column assembly and the separation, refer to the "XS Column data sheet".

#### Depletion with LD Columns

1. Place LD Column in the magnetic field of a suitable MACS Separator (see "LD Column data sheet").
2. Prepare column by rinsing with 2 mL of buffer.
3. Apply cell suspension onto the column.
4. Collect unlabeled cells which pass through and wash column with 2×1 mL of buffer. Collect total effluent. This is the unlabeled cell fraction.

#### Depletion with CS Columns

1. Assemble CS Column and place it in the magnetic field of a suitable MACS Separator (see "CS Column data sheet").
2. Prepare column by filling and rinsing with 60 mL of buffer. Attach a 22G flow resistor to the 3-way-stopcock of the assembled column (see "CS Column data sheet").
3. Apply cell suspension onto the column.
4. Collect unlabeled cells which pass through and wash column with 30 mL buffer from top. Collect total effluent. This is the unlabeled cell fraction.

#### Depletion with D Columns

For instructions on column assembly and separation, refer to the "D Column data sheet".

## Magnetic separation with autoMACS™ Separator

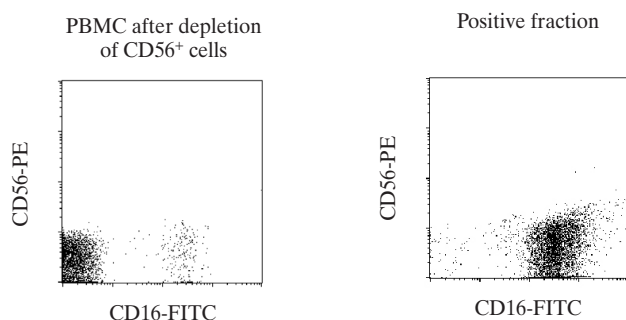
▲ Refer to the autoMACS™ User Manual for instructions on how to use the autoMACS Separator.

1. Prepare and prime autoMACS Separator.
2. Place tube containing magnetically labeled cells in autoMACS. Choose a separation program according to the recommendations in the autoMACS User Manual.

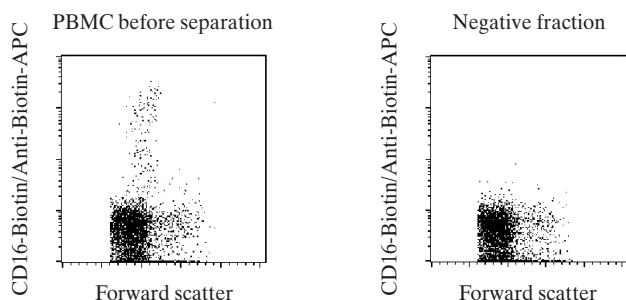
▲ **Note:** Program choice depends on the isolation strategy, the strength of magnetic labeling and the frequency of magnetically labeled cells. For details see autoMACS User Manual: "autoMACS Cell Separation Programs".

## 3. Examples of separations using CD16 MicroBeads

A) Positive selection of CD16<sup>+</sup> NK cells from rhesus monkey PBMCs using MACS CD16 MicroBeads and a MiniMACS™ Separator with an MS Column. As some rhesus monkey monocytes also express CD16, they were depleted prior to positive selection of CD16<sup>+</sup> NK cells by using MACS CD56 MicroBeads (# 130-091-094) and a MidiMACS™ Separator with an LD Column. The cells are fluorescently stained with CD16-FITC and CD56-PE. Cell debris and dead cells were excluded from the analysis based on scatter signals and PI fluorescence.



B) Depletion of CD16<sup>+</sup> cells from rhesus monkey PBMC using MACS CD16 MicroBeads and a MidiMACS with an LD Column. The cells are fluorescently stained with CD16-Biotin and Anti-Biotin-APC (# 130-090-856). Cell debris and dead cells were excluded from the analysis based on scatter signals and PI fluorescence.



## 4. Reference

1. Carter, DL; Shieh, TM; Blosser, RL; Chadwick, KR; Margolick, JB; Hildreth, JEK; Clements, JE; Zink, MC (1999) CD56 Identifies Monocytes and Not Natural Killer Cells in Rhesus Macaques. Cytometry 37: 41–50.

## Warnings

Reagents contain sodium azide. Under acidic conditions sodium azide yields hydrazoic acid, which is extremely toxic. Azide compounds should be diluted with running water before discarding. These precautions are recommended to avoid deposits in plumbing where explosive conditions may develop.

## Warranty

The products sold hereunder are warranted only to be free from defects in workmanship and material at the time of delivery to the customer. MILTENYI BIOTEC GmbH makes no warranty or representation, either expressed or implied, with respect to the fitness of a product for a particular purpose. There are no warranties, expressed or implied, which extend beyond the technical specifications of the products. MILTENYI BIOTEC GmbH's liability is limited to either replacement of the products or refund of the purchase price. MILTENYI BIOTEC GmbH is not liable for any property damage, personal injury or economic loss caused by the product.

Ficoll-Paque is a trademark of GE Healthcare companies.

MACS is a registered trademark of Miltenyi Biotec GmbH.