

### Contents

1. Description
  - 1.1 Principle of the MACS® Separation
  - 1.2 Background information
  - 1.3 Applications
  - 1.4 Reagent and instrument requirements
2. Protocol
  - 2.1 Reconstitution of MicroBeads
  - 2.2 Sample preparation
  - 2.3 Magnetic labeling
  - 2.4 Magnetic separation
3. Example of a separation using the CD11c MicroBeads
4. References

### 1. Description

<b>Components</b>	<b>1 vial CD11c MicroBeads, mouse – lyophilized:</b> MicroBeads conjugated to monoclonal anti-mouse CD11c antibodies (isotype: hamster IgG). <b>2 mL Reconstitution Buffer</b>
<b>Capacity</b>	For $2 \times 10^9$ total cells.
<b>Product format</b>	Lyophilized MicroBeads. Reconstitution Buffer contains stabilizer and 0.05% sodium azide.
<b>Storage</b>	Store protected from light at 2–8 °C. Do not freeze. The expiration date is indicated on the vial label. For information about reconstitution of the lyophilized MicroBeads and storage after reconstitution refer to chapter 2.1.

#### 1.1 Principle of the MACS® Separation

First, the CD11c<sup>+</sup> cells are magnetically labeled with CD11c MicroBeads. Then, the cell suspension is loaded onto a MACS® Column, which is placed in the magnetic field of a MACS Separator. The magnetically labeled CD11c<sup>+</sup> cells are retained within the column. The unlabeled cells run through; this cell fraction is thus depleted of CD11c<sup>+</sup> cells. After removing the column from the magnetic field, the magnetically retained CD11c<sup>+</sup> cells can be eluted as the positively selected cell fraction. To increase the purity, the positively selected cell fraction containing the CD11c<sup>+</sup> cells can be separated over a second column.

#### 1.2 Background information

CD11c MicroBeads were developed for the isolation of mouse dendritic cells (DCs) from single-cell suspensions of lymphoid and non-lymphoid tissues. Unlike in humans, CD11c is expressed on all defined DC subsets in mice. With CD11c MicroBeads, complicated

procedures for the isolation of DCs are replaced by a fast and simple positive selection strategy.

#### 1.3 Applications

- Isolation of highly pure DCs from spleen and lymph nodes<sup>1</sup>, Peyer's patches<sup>2</sup>, colonic lamina propria<sup>3</sup>, bone marrow<sup>4</sup>, epidermis<sup>5</sup>, lung<sup>6</sup>, liver<sup>7</sup>, or brain<sup>8</sup>.
- Isolation of DCs for analysis of their phenotypical and functional properties or studies on T cell activation, polarization and tolerance induction in different experimental mouse models.

#### 1.4 Reagent and instrument requirements

- **Buffer:** Prepare a solution containing phosphate-buffered saline (PBS), pH 7.2, 0.5% bovine serum albumin (BSA), and 2 mM EDTA by diluting MACS BSA Stock Solution (# 130-091-376) 1:20 with autoMACS® Rinsing Solution (# 130-091-222). Keep buffer cold (2–8 °C). Degas buffer before use, as air bubbles could block the column.  
 ▲ **Note:** EDTA can be replaced by other supplements such as anticoagulant citrate dextrose formula-A (ACD-A) or citrate phosphate dextrose (CPD). BSA can be replaced by other proteins such as mouse serum albumin, mouse serum, or fetal bovine serum (FBS). Buffers or media containing Ca<sup>2+</sup> or Mg<sup>2+</sup> are not recommended for use.
- **MACS Columns and MACS Separators:** CD11c<sup>+</sup> cells can be enriched by using MS, LS, or XS Columns or depleted with the use of LD, CS, or D Columns. Cells that strongly express the CD11c antigen can also be depleted using MS, LS, or XS Columns. Positive selection or depletion can also be performed by using the autoMACS Pro or the autoMACS Separator.

Column	Max. number of labeled cells	Max. number of total cells	Separator
<b>Positive selection</b>			
MS	10 <sup>7</sup>	2 × 10 <sup>8</sup>	MiniMACS, OctoMACS, VarioMACS, SuperMACS II
LS	10 <sup>8</sup>	2 × 10 <sup>9</sup>	MidiMACS, QuadroMACS, VarioMACS, SuperMACS II
XS	10 <sup>9</sup>	2 × 10 <sup>10</sup>	SuperMACS II
<b>Depletion</b>			
LD	10 <sup>8</sup>	5 × 10 <sup>8</sup>	MidiMACS, QuadroMACS, VarioMACS, SuperMACS II
CS	2 × 10 <sup>8</sup>		VarioMACS, SuperMACS II
D	10 <sup>9</sup>		SuperMACS II
<b>Positive selection or depletion</b>			
autoMACS	2 × 10 <sup>8</sup>	4 × 10 <sup>9</sup>	autoMACS Pro, autoMACS

▲ **Note:** Column adapters are required to insert certain columns into the VarioMACS™ or SuperMACS™ II Separators. For details refer to the respective MACS Separator data sheet.

- (Optional) Spleen Dissociation Kit, mouse (# 130-095-926).
- (Optional) Fluorochrome-conjugated antibodies for flow cytometric analysis, e.g., CD11c-PE, mouse (# 130-091-830) or Anti-MHC Class II-FITC, mouse (# 130-081-601). For more information about antibodies refer to [www.miltenyibiotec.com/antibodies](http://www.miltenyibiotec.com/antibodies).
- (Optional) FcR Blocking Reagent, mouse (# 130-092-575) to avoid Fc receptor-mediated antibody labeling.
- (Optional) Propidium Iodide Solution (# 130-093-233) or 7-AAD for flow cytometric exclusion of dead cells.
- (Optional) Dead Cell Removal Kit (# 130-090-101) for the depletion of dead cells.
- (Optional) Pre-Separation Filters, 30  $\mu\text{m}$  (# 130-041-407) to remove cell clumps.

## 2. Protocol

### 2.1 Reconstitution of MicroBeads

Reconstitute the lyophilized MicroBeads by adding all Reconstitution Buffer to the vial. Mix by pipetting up and down until resuspended. After reconstitution the MicroBeads are stable for 9 months at 2–8 °C. Write the new expiration date after reconstitution on the vial label.

### 2.2 Sample preparation

For highest recovery and purity of CD11c<sup>+</sup> DCs from mouse spleen, we recommend enzymatic disaggregation using the Spleen Dissociation Kit, mouse (130-095-926). Protocols which rely only on mechanical disruption are not recommended.

For details refer to the protocols section at [www.miltenyibiotec.com/protocols](http://www.miltenyibiotec.com/protocols).

▲ Dead cells may bind non-specifically to MACS MicroBeads. To remove dead cells, we recommend using density gradient centrifugation or the Dead Cell Removal Kit (# 130-090-101).



### 2.3 Magnetic labeling

▲ Work fast, keep cells cold, and use pre-cooled solutions. This will prevent capping of antibodies on the cell surface and non-specific cell labeling.

▲ Volumes for magnetic labeling given below are for up to  $10^7$  total cells. When working with fewer than  $10^7$  cells, use the same volumes as indicated. When working with higher cell numbers, scale up all reagent volumes and total volumes accordingly (e.g. for  $2 \times 10^7$  total cells, use twice the volume of all indicated reagent volumes and total volumes).

▲ For optimal performance it is important to obtain a single-cell suspension before magnetic labeling. Pass cells through 30  $\mu\text{m}$  nylon mesh (Pre-Separation Filters, 30  $\mu\text{m}$  # 130-041-407) to remove cell clumps which may clog the column. Moisten filter with buffer before use.

▲ The recommended incubation temperature is 2–8 °C. Higher temperatures and/or longer incubation times may lead to non-specific cell labeling. Working on ice may require increased incubation times.

1. Determine cell number.
2. Centrifuge cell suspension at 200 $\times$ g for 10 minutes. Aspirate supernatant completely.
3. Resuspend cell pellet in 400  $\mu\text{L}$  of buffer per  $10^8$  total cells.  
▲ **Note:** To obtain high purities of DCs ( $\geq 90\%$ ), Fc receptor-mediated magnetic labeling should be blocked by adding FcR Blocking Reagent (CD16/32 antibody) or mouse immunoglobulin (1 mg per 500  $\mu\text{L}$  labeling volume) to the cell suspension before adding CD11c MicroBeads.
4. Add 100  $\mu\text{L}$  of CD11c MicroBeads per  $10^8$  total cells.
5. Mix well and incubate for 15 minutes in the refrigerator (2–8 °C).
6. (Optional) Add staining antibodies, e.g., 10  $\mu\text{L}$  of CD11c-PE (# 130-091-830), and incubate for 5 minutes in the dark in the refrigerator (2–8 °C).
7. Wash cells by adding 1–2 mL of buffer per  $10^7$  cells and centrifuge at 200 $\times$ g for 10 minutes. Aspirate supernatant completely.
8. Resuspend up to  $10^8$  cells in 500  $\mu\text{L}$  of buffer.  
▲ **Note:** For higher cell numbers, scale up buffer volume accordingly.  
▲ **Note:** For depletion with LD Columns, resuspend up to  $1.25 \times 10^8$  cells in 500  $\mu\text{L}$  of buffer.
9. Proceed to magnetic separation (2.3).



### 2.4 Magnetic separation

▲ Choose an appropriate MACS Column and MACS Separator according to the number of total cells and the number of CD11c<sup>+</sup> cells. For details refer to the table in section 1.4.

▲ Always wait until the column reservoir is empty before proceeding to the next step.

#### Magnetic separation with MS or LS Columns

1. Place column in the magnetic field of a suitable MACS Separator. For details refer to the respective MACS Column data sheet.
2. Prepare column by rinsing with the appropriate amount of buffer:  
MS: 500  $\mu\text{L}$       LS: 3 mL
3. Apply cell suspension onto the column. Collect flow-through containing unlabeled cells.
4. Wash column with the appropriate amount of buffer. Collect unlabeled cells that pass through and combine with the flow-through from step 3.  
MS:  $3 \times 500 \mu\text{L}$       LS:  $3 \times 3 \text{ mL}$   
▲ **Note:** Perform washing steps by adding buffer aliquots only when the column reservoir is empty.
5. Remove column from the separator and place it on a suitable collection tube.
6. Pipette the appropriate amount of buffer onto the column. Immediately flush out the magnetically labeled cells by firmly pushing the plunger into the column.  
MS: 1 mL      LS: 5 mL

- (Optional) To increase the purity of CD11c<sup>+</sup> cells, the eluted fraction can be enriched over a second MS or LS Column. Repeat the magnetic separation procedure as described in steps 1 to 6 by using a new column.

### Magnetic separation with XS Columns

For instructions on the column assembly and the separation refer to the XS Column data sheet.

#### Depletion with LD Columns

- Place LD Column in the magnetic field of a suitable MACS Separator. For details refer to the LD Column data sheet.
- Prepare column by rinsing with 2 mL of buffer.
- Apply cell suspension onto the column.
- Collect unlabeled cells that pass through and wash column with 2×1 mL of buffer. Collect total flow-through; this is the unlabeled cell fraction. Perform washing steps by adding buffer two times. Only add new buffer when the column reservoir is empty.

#### Depletion with CS Columns

- Assemble CS Column and place it in the magnetic field of a suitable MACS Separator. For details refer to the CS Column data sheet.
- Prepare column by filling and rinsing with 60 mL of buffer. Attach a 22G flow resistor to the 3-way stopcock of the assembled column. For details refer to the CS Column data sheet.
- Apply cell suspension onto the column.
- Collect unlabeled cells that pass through and wash column with 30 mL buffer from the top. Collect total flow-through; this is the unlabeled cell fraction.

#### Depletion with D Columns

For instructions on column assembly and separation refer to the D Column data sheet.

### Magnetic separation with the autoMACS<sup>®</sup> Pro Separator or the autoMACS<sup>®</sup> Separator

▲ Refer to the respective user manual for instructions on how to use the autoMACS<sup>®</sup> Pro Separator or the autoMACS Separator.

▲ Buffers used for operating the autoMACS Pro Separator or the autoMACS Separator should have a temperature of ≥10 °C.

▲ Program choice depends on the isolation strategy, the strength of magnetic labeling, and the frequency of magnetically labeled cells. For details refer to the section describing the cell separation programs in the respective user manual.

#### Magnetic separation with the autoMACS<sup>®</sup> Pro Separator

- Prepare and prime the instrument.
- Apply tube containing the sample and provide tubes for collecting the labeled and unlabeled cell fractions. Place sample tube in row A of the tube rack and the fraction collection tubes in rows B and C.

- For a standard separation choose one of the following programs:

#### Positive selection: Posseld

Collect positive fraction in row C of the tube rack.

#### Depletion: Depletes

Collect negative fraction in row B of the tube rack.

### Magnetic separation with the autoMACS<sup>®</sup> Separator

- Prepare and prime the instrument.
- Apply tube containing the sample and provide tubes for collecting the labeled and unlabeled cell fractions. Place sample tube at the uptake port and the fraction collection tubes at port neg1 and port pos2.
- For a standard separation choose one of the following programs:

#### Positive selection: Posseld

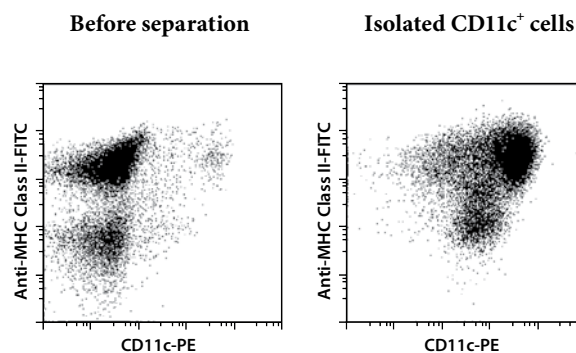
Collect positive fraction from outlet port pos2.

#### Depletion: Depletes

Collect negative fraction from outlet port neg1.

### 3. Example of a separation using the CD11c MicroBeads

CD11c MicroBeads were reconstituted as described in 2.1. CD11c<sup>+</sup> cells were isolated from mouse spleen using CD11c MicroBeads, two MS Columns, and a MiniMACS<sup>™</sup> Separator. Cells were fluorescently stained with CD11c-PE (# 130-091-830) and Anti-MHC Class II-FITC (#130-081-601) and analyzed by flow cytometry using the MACSQuant<sup>®</sup> Analyzer. Cell debris and dead cells were excluded from the analysis based on scatter signals and propidium iodide fluorescence.



## 4. References

1. Williamson, E. *et al.* (2002) Regulation of mucosal dendritic cell function by receptor activator of NF- $\kappa$ B (Rank)/Rank ligand interactions: impact on tolerance induction. *J. Immunol.* 169: 3606–3612.
2. Kadaoui, K. A. and Corthésy, B. (2004) Isolation of dendritic cells from mouse Peyer's patches using magnetic cell sorting. *MACS&more* 8: 10–12.
3. Krajina, T. *et al.* (2003) Colonic lamina propria dendritic cells in mice with CD4<sup>+</sup> T cell-induced colitis. *Eur. J. Immunol.* 33: 1073–1083.
4. Hou, W. S. and van Parijs, L. (2004) A Bcl-2-dependent molecular timer regulates the lifespan and immunogenicity of dendritic cells. *Nat. Immunol.* 5: 583–589.
5. Sato, T. *et al.* (2002) Consequences of OX40-OX40 ligand interactions in Langerhans cell function: enhanced contact hypersensitivity responses in OX40L-transgenic mice. *Eur. J. Immunol.* 32: 3326–3335.
6. Swanson, K.A. *et al.* (2004) Flt3-Ligand, Il-4, GM-CSF, and adherence-mediated isolation of murine lung dendritic cells: assessment of isolation technique on phenotype and function. *J. Immunol.* 173: 4875–4881.
7. Johansson, C. and Wick, M. J. (2004) Liver Dendritic Cells Present Bacterial Antigens and Produce Cytokines upon *Salmonella* Encounter. *J. Immunol.* 172: 2496–2503.
8. Fischer, H. G. *et al.* (2000) Phenotype and Functions of Brain Dendritic Cells Emerging During Chronic Infection of Mice with *Toxoplasma gondii*. *J. Immunol.* 164: 4826–4834.

All protocols and data sheets are available at [www.miltenyibiotec.com](http://www.miltenyibiotec.com).

### Warnings

Reagents contain sodium azide. Under acidic conditions sodium azide yields hydrazoic acid, which is extremely toxic. Azide compounds should be diluted with running water before discarding. These precautions are recommended to avoid deposits in plumbing where explosive conditions may develop.

### Warranty

The products sold hereunder are warranted only to be free from defects in workmanship and material at the time of delivery to the customer. Miltenyi Biotec GmbH makes no warranty or representation, either expressed or implied, with respect to the fitness of a product for a particular purpose. There are no warranties, expressed or implied, which extend beyond the technical specifications of the products. Miltenyi Biotec GmbH's liability is limited to either replacement of the products or refund of the purchase price. Miltenyi Biotec GmbH is not liable for any property damage, personal injury or economic loss caused by the product.

autoMACS, MACS, and MACSQuant are registered trademarks and gentleMACS, MidiMACS, MiniMACS, OctoMACS, QuadroMACS, SuperMACS, and VarioMACS are trademarks of Miltenyi Biotec GmbH.

Copyright © 2011 Miltenyi Biotec GmbH. All rights reserved.